

# Mouse CDH6/Cadherin-6 Protein

Cat. No. CDH-MM106

## Description

<b>Source</b>	Recombinant Mouse CDH6/Cadherin-6 Protein is expressed from Expi293 with His tag at the C-terminal. It contains Thr19-Ala615.
<b>Accession</b>	P97326
<b>Molecular Weight</b>	The protein has a predicted MW of 67.54 kDa. Due to glycosylation, the protein migrates to 75-85 kDa based on Tris-Bis PAGE result.
<b>Endotoxin</b>	Less than 1EU per µg by the LAL method.
<b>Purity</b>	> 95% as determined by Tris-Bis PAGE > 90% as determined by HPLC

## Formulation and Storage

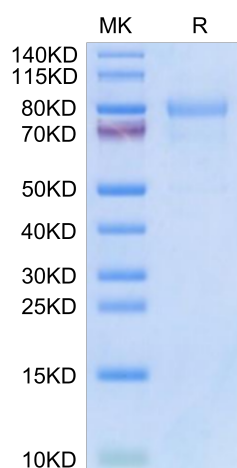
<b>Formulation</b>	Supplied as 0.22µm filtered solution in PBS (pH 7.4). Please dilute to the desired concentration according to the concentration of the solution shown on the product label.
<b>Storage</b>	Valid for 12 months from date of receipt when stored at -80°C. Recommend to aliquot the protein into smaller quantities for optimal storage. Please do not repeated freeze-thaw cycles.

## Background

Cadherin 6 (CDH6) is an adhesion molecule localizing to the endometrial luminal epithelial cell surface in the mid-secretory/receptive phase and knockdown of CDH6 in the Ishikawa cells (receptive endometrial epithelial cell line) compromises cell integrity.

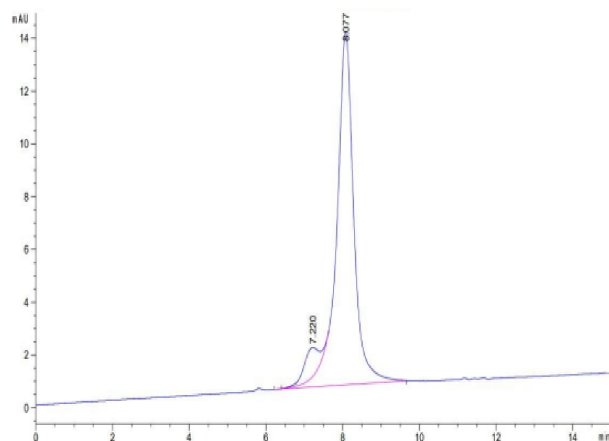
## Assay Data

### Tris-Bis PAGE



Mouse CDH6 on Tris-Bis PAGE under reduced condition. The purity is greater than 95%.

### SEC-HPLC



The purity of Mouse CDH6 is greater than 90% as determined by SEC-HPLC.