

Rhesus macaque CDH17/Cadherin 17 Protein, Ultra Low Endotoxin

Cat. No. CDH-RM117-UL

Description

Source	Recombinant Rhesus macaque CDH17/Cadherin 17 Protein is expressed from HEK293 with His tag at the C-Terminus. It contains Gln23-Thr784.
Accession	A0A1D5R2B4
Molecular Weight	The protein has a predicted MW of 85.60 kDa. Due to glycosylation, the protein migrates to 90-110 kDa based on Bis-Tris PAGE result.
Endotoxin	Less than 0.01 EU per µg by the LAL method.
Purity	> 95% as determined by Bis-Tris PAGE > 90% as determined by HPLC

Formulation and Storage

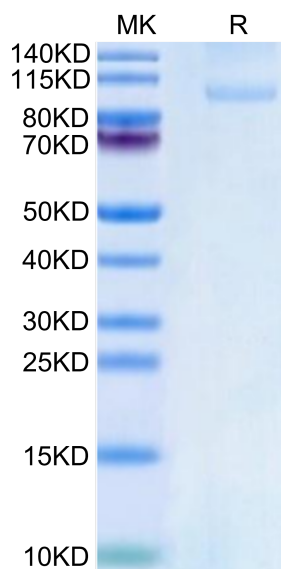
Formulation	Lyophilized from 0.22µm filtered solution in 20mM Tris, 150mM NaCl (pH 8.0). Normally 8% trehalose is added as protectant before lyophilization.
Reconstitution	Dissolve the lyophilized protein in distilled water. Please refer to the Certificate of Analysis for detailed instructions.
Storage	-20 to -80°C for 12 months as supplied from date of receipt. -80°C for 3 months after reconstitution. Recommend to aliquot the protein into smaller quantities for optimal storage. Please minimize freeze-thaw cycles.

Background

Liver-intestine cadherin (CDH17) has been known to function as a tumor stimulator and diagnostic marker for almost two decades. In vivo studies showed CDH17 knockout resulted in apoptotic PC tumor death through activating caspase-3 activity. Taken together, CDH17 functions as an oncogenic molecule critical to PC growth by regulating tumor apoptosis signaling pathways and CDH17 could be targeted to develop an anti-PC therapeutic approach.

Assay Data

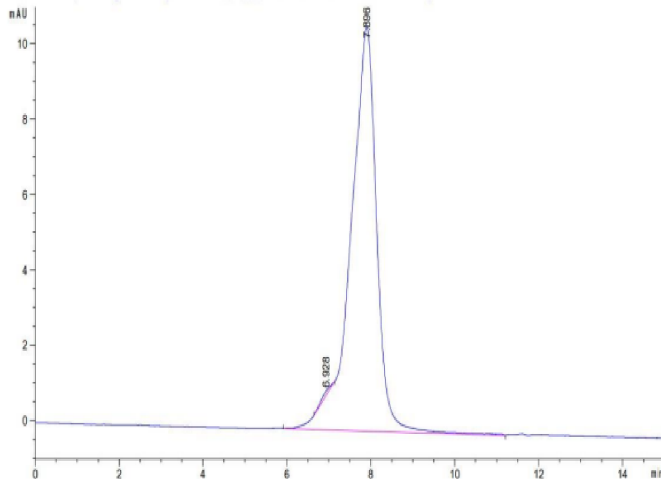
Bis-Tris PAGE



Rhesus macaque CDH17 on Bis-Tris PAGE under reduced condition. The purity is greater than 90%.

SEC-HPLC

Assay Data

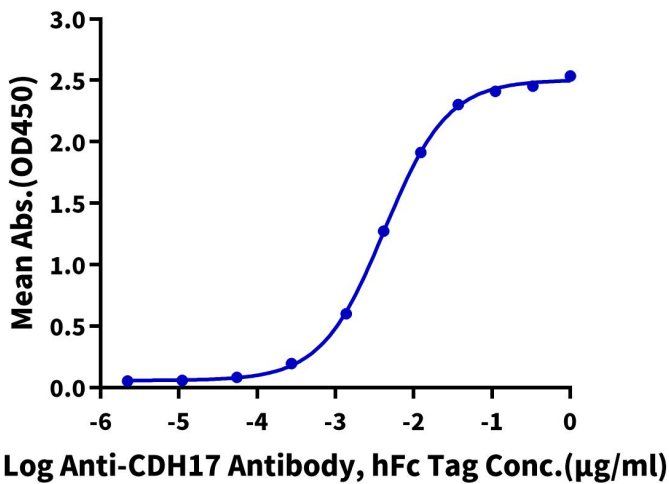


The purity of Rhesus macaque CDH17 is greater than 90% as determined by SEC-HPLC.

ELISA Data

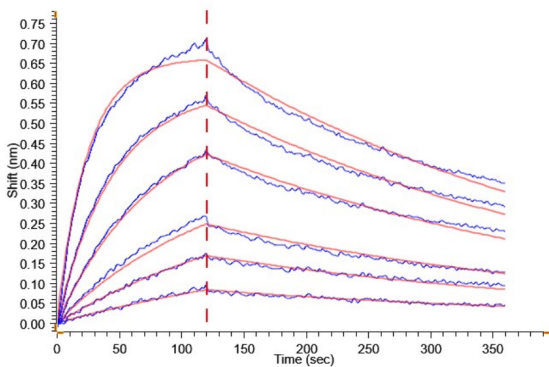
Rhesus macaque CDH17, His Tag ELISA

0.05µg Rhesus macaque CDH17, His Tag Per Well



Immobilized Rhesus macaque CDH17, His Tag at 0.5µg/ml (100µl/well) on the plate. Dose response curve for Anti-CDH17 Antibody, hFc Tag with the EC50 of 4.2ng/ml determined by ELISA.

BLI Data



Loaded Anti-CDH17 Antibody, hFc-Avi Tag on ProA-Biosensor can bind Rhesus macaque CDH17, His Tag with an affinity constant of 7.54 nM as determined in BLI assay .