

# Rhesus macaque CDH17/Cadherin 17 Protein

Cat. No. CDH-RM117

## Description

<b>Source</b>	Recombinant Rhesus macaque CDH17/Cadherin 17 Protein is expressed from HEK293 with His tag at the C-Terminus. It contains Gln23-Thr784.
<b>Accession</b>	A0A1D5R2B4
<b>Molecular Weight</b>	The protein has a predicted MW of 85.60 kDa. Due to glycosylation, the protein migrates to 90-110 kDa based on Tris-Bis PAGE result.
<b>Endotoxin</b>	Less than 1EU per µg by the LAL method.
<b>Purity</b>	> 95% as determined by Tris-Bis PAGE > 95% as determined by HPLC

## Formulation and Storage

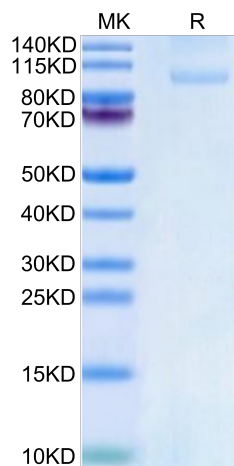
<b>Formulation</b>	Lyophilized from 0.22µm filtered solution in 20mM Tris, 150mM NaCl (pH 8.0). Normally 8% trehalose is added as protectant before lyophilization.
<b>Reconstitution</b>	Centrifuge the tube before opening. Reconstituting to a concentration more than 100 µg/ml is recommended. Dissolve the lyophilized protein in distilled water.
<b>Storage</b>	-20 to -80°C for 12 months as supplied from date of receipt. -80°C for 3-6 months after reconstitution. 2-8°C for 2-7 days after reconstitution. Recommend to aliquot the protein into smaller quantities for optimal storage. Please minimize freeze-thaw cycles.

## Background

Liver-intestine cadherin (CDH17) has been known to function as a tumor stimulator and diagnostic marker for almost two decades. In vivo studies showed CDH17 knockout resulted in apoptotic PC tumor death through activating caspase-3 activity. Taken together, CDH17 functions as an oncogenic molecule critical to PC growth by regulating tumor apoptosis signaling pathways and CDH17 could be targeted to develop an anti-PC therapeutic approach.

## Assay Data

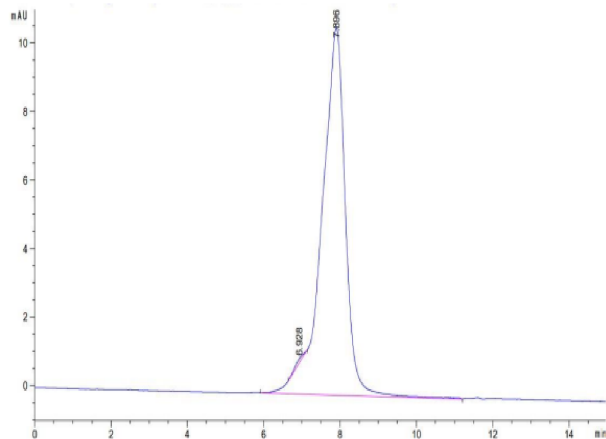
### Tris-Bis PAGE



Rhesus macaque CDH17 on Tris-Bis PAGE under reduced condition. The purity is greater than 95%.

### SEC-HPLC

Assay Data



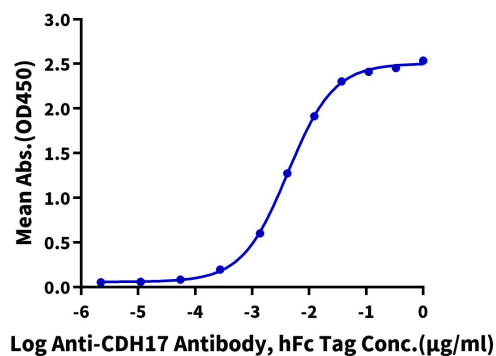
The purity of Rhesus macaque CDH17 is greater than 95% as determined by SEC-HPLC.

Assay Data

ELISA Data

**Rhesus macaque CDH17, His Tag ELISA**

0.05µg Rhesus macaque CDH17, His Tag Per Well



Immobilized Rhesus macaque CDH17, His Tag at 0.5µg/ml (100µl/well) on the plate. Dose response curve for Anti-CDH17 Antibody, hFc Tag with the EC50 of 4.2ng/ml determined by ELISA.