

# Human CHRDL1 Protein

Cat. No. CDL-HE101

## Description

<b>Source</b>	Recombinant Human CHRDL1 Protein is expressed from E.coli with His tag at the N-Terminus. It contains Glu28-Cys456.
<b>Accession</b>	Q9BU40-1
<b>Molecular Weight</b>	The protein has a predicted MW of 50 kDa same as Bis-Tris PAGE result.
<b>Endotoxin</b>	Less than 1EU per µg by the LAL method.
<b>Purity</b>	> 90% as determined by Bis-Tris PAGE

## Formulation and Storage

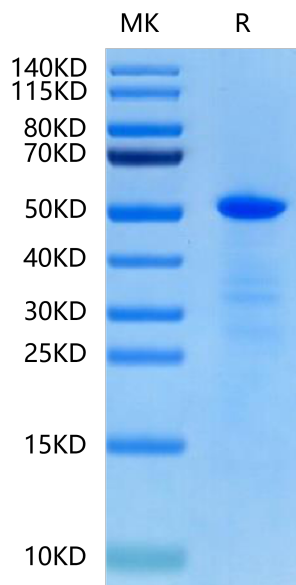
<b>Formulation</b>	Lyophilized from 0.22µm filtered solution in 4mM HCl. Normally 8% trehalose is added as protectant before lyophilization.
<b>Reconstitution</b>	Centrifuge the tube before opening. Reconstituting to a concentration more than 100 µg/ml is recommended. Dissolve the lyophilized protein in 4mM HCl.
<b>Storage</b>	-20 to -80°C for 12 months as supplied from date of receipt. -80°C for 3 months after reconstitution. Recommend to aliquot the protein into smaller quantities for optimal storage. Please minimize freeze-thaw cycles.

## Background

CHRDL1 (Chordin-like 1) is a secreted protein that acts as an antagonist of bone morphogenetic protein (BMP). BMP plays a role as an activator of BMP receptor II (BMPRII), which mediates extracellular to intracellular signal transmission and is involved in carcinogenesis and metastasis. The hypermethylation of the CHRDL1 promoter in gastric cancer, which induced low expression of CHRDL1 and decreased its secretion to the supernatant.

## Assay Data

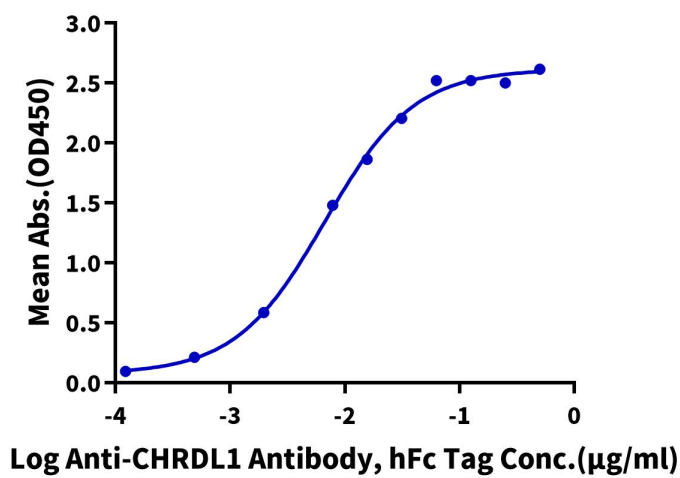
### Bis-Tris PAGE



Human CHRDL1 on Bis-Tris PAGE under reduced condition. The purity is greater than 90%.

### ELISA Data

## Assay Data

**Human CHRDL1, His Tag ELISA**0.1  $\mu\text{g}$  Human CHRDL1, His Tag Per Well

Immobilized Human CHRDL1, His Tag at 1  $\mu\text{g}/\text{ml}$  (100  $\mu\text{l}/\text{Well}$ ) on the plate. Dose response curve for Anti-CHRDL1 Antibody, hFc Tag with the EC50 of 6.7 ng/ml determined by ELISA (QC Test).