

# Rhesus macaque Complement Factor D/CFD Protein

Cat. No. CFD-CM101

## Description

<b>Source</b>	Recombinant Rhesus macaque Complement Factor D/CFD Protein is expressed from HEK293 with His tag at the C-Terminus. It contains Gln21-Ala253.
<b>Accession</b>	H9EXC1-1
<b>Molecular Weight</b>	The protein has a predicted MW of 25.7 kDa. Due to glycosylation, the protein migrates to 26-30 kDa based on Bis-Tris PAGE result.
<b>Endotoxin</b>	Less than 1EU per $\mu\text{g}$ by the LAL method.
<b>Purity</b>	> 95% as determined by Bis-Tris PAGE > 95% as determined by HPLC

## Formulation and Storage

<b>Formulation</b>	Lyophilized from 0.22 $\mu\text{m}$ filtered solution in 50mM Tris, 150mM NaCl (pH 8.0). Normally 8% trehalose is added as protectant before lyophilization.
<b>Reconstitution</b>	Centrifuge the tube before opening. Reconstituting to a concentration more than 100 $\mu\text{g}/\text{ml}$ is recommended. Dissolve the lyophilized protein in distilled water.
<b>Storage</b>	-20 to -80°C for 12 months as supplied from date of receipt. -80°C for 3-6 months after reconstitution. 2-8°C for 2-7 days after reconstitution. Recommend to aliquot the protein into smaller quantities for optimal storage. Please minimize freeze-thaw cycles.

## Background

Complement factor D is a serine protease essential for the activation of the alternative pathway and is expressed in the kidney, adipocytes, and macrophages. Factor D is found at relatively high levels in glomeruli suggesting that this component of the complement cascade could influence renal pathophysiology. Complement factor D or alternative pathway activation is needed to prevent spontaneous accumulation of C3 and IgM deposits within the mesangium.

## Assay Data

### Bis-Tris PAGE



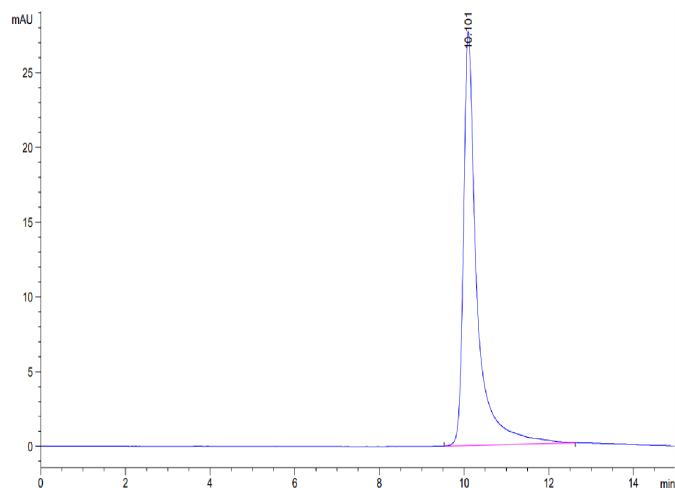
Rhesus macaque Complement Factor D on Bis-Tris PAGE under reduced condition. The purity is greater than 95%.

### SEC-HPLC

# Rhesus macaque Complement Factor D/CFD Protein

Cat. No. CFD-CM101

## Assay Data

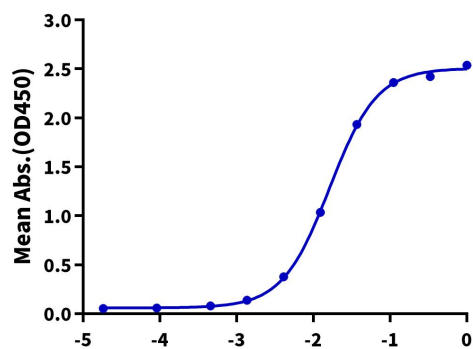


The purity of Rhesus macaque Complement Factor D is greater than 95% as determined by SEC-HPLC.

## ELISA Data

### Rhesus macaque Complement Factor D, His Tag ELISA

0.1 $\mu$ g Rhesus macaque Complement Factor D, His Tag Per Well



Immobilized Rhesus macaque Complement Factor D, His Tag at 1 $\mu$ g/ml (100 $\mu$ l/well) on the plate. Dose response curve for Anti-Complement Factor D Antibody, hFc Tag with the EC<sub>50</sub> of 16.3ng/ml determined by ELISA.

Log Anti-Complement Factor D Antibody, hFc Tag Conc.( $\mu$ g/ml)