

# Mouse Complement Factor D/CFD Protein

Cat. No. CFD-MM201

## Description

<b>Source</b>	Recombinant Mouse Complement Factor D/CFD Protein is expressed from HEK293 with hFc tag at the C-Terminus. It contains Ile26-Ser259.
<b>Accession</b>	P03953-1
<b>Molecular Weight</b>	The protein has a predicted MW of 52.2 kDa. Due to glycosylation, the protein migrates to 60-70 kDa based on Bis-Tris PAGE result.
<b>Endotoxin</b>	Less than 1EU per µg by the LAL method.
<b>Purity</b>	> 95% as determined by Bis-Tris PAGE > 95% as determined by HPLC

## Formulation and Storage

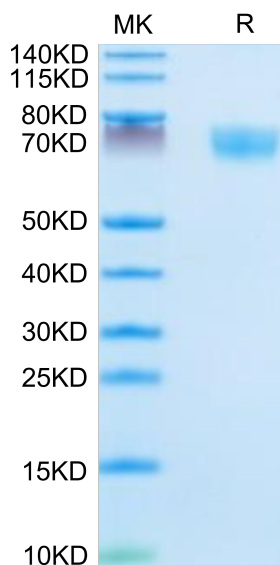
<b>Formulation</b>	Supplied as 0.22µm filtered solution in 20mM Tris,500mM NaCl (pH 7.4).
<b>Storage</b>	Valid for 12 months from date of receipt when stored at -80°C. Recommend to aliquot the protein into smaller quantities for optimal storage. Please minimize freeze-thaw cycles.

## Background

Complement factor D is a serine protease essential for the activation of the alternative pathway and is expressed in the kidney, adipocytes, and macrophages. Factor D is found at relatively high levels in glomeruli suggesting that this component of the complement cascade could influence renal pathophysiology. Complement factor D or alternative pathway activation is needed to prevent spontaneous accumulation of C3 and IgM deposits within the mesangium.

## Assay Data

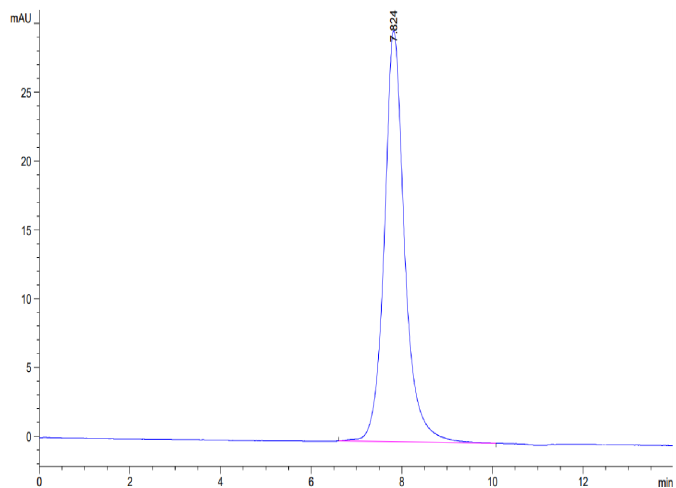
### Bis-Tris PAGE



Mouse Complement Factor D on Bis-Tris PAGE under reduced condition. The purity is greater than 95%.

### SEC-HPLC

Assay Data



The purity of Mouse Complement Factor D is greater than 95% as determined by SEC-HPLC.