

# Human CTGF/CCN2 Protein

Cat. No. CGF-HM101

## Description

<b>Source</b>	Recombinant Human CTGF/CCN2 Protein is expressed from HEK293 with His tag at the C-Terminus. It contains Gln27-Ala349.
<b>Accession</b>	Q5M8T4
<b>Molecular Weight</b>	The protein has a predicted MW of 36.56 kDa. Due to glycosylation, the protein migrates to 45-60 kDa based on Bis-Tris PAGE result.
<b>Endotoxin</b>	Less than 1 EU per µg by the LAL method.
<b>Purity</b>	>95% as determined by Bis-Tris PAGE

## Formulation and Storage

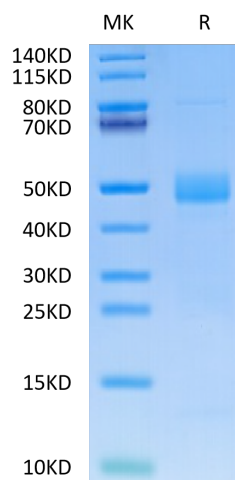
<b>Formulation</b>	Lyophilized from 0.22 µm filtered solution in PBS (pH 7.4). Normally 8% trehalose is added as protectant before lyophilization.
<b>Reconstitution</b>	Centrifuge the tube before opening. Reconstituting to a concentration more than 100 µg/ml is recommended. Dissolve the lyophilized protein in distilled water.
<b>Storage</b>	-20 to -80°C for 12 months as supplied from date of receipt. -80°C for 3 months after reconstitution. Recommend to aliquot the protein into smaller quantities for optimal storage. Please minimize freeze-thaw cycles.

## Background

Connective tissue growth factor (CTGF) is a member of the CCN matricellular protein family, consisting of four domains, that regulates the signaling of other growth factors and promotes kidney fibrosis. CTGF can simultaneously interact with several factors with its four domains. The microenvironment differs depending on the types of cells and tissues and differentiation stages of these cells.

## Assay Data

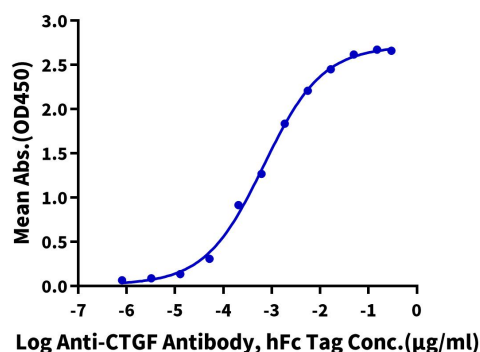
### Bis-Tris PAGE



Human CTGF on Bis-Tris PAGE under reduced condition. The purity is greater than 95%.

### ELISA Data

**Human CTGF, His Tag ELISA**  
0.1µg Human CTGF, His Tag Per Well



Immobilized Human CTGF, His Tag at 1 µg/ml (100 µl/well) on the plate. Dose response curve for Anti-CTGF Antibody, hFc Tag with the EC50 of 6.7 ng/ml determined by ELISA.