

Human CTGF/CCN2 Protein

Cat. No. CGF-HM201



Description

Source	Recombinant Human CTGF/CCN2 Protein is expressed from HEK293 with hFc tag at the N-Terminus. It contains Gln27-Ala349.
Accession	Q5M8T4
Molecular Weight	The protein has a predicted MW of 61.77 kDa. Due to glycosylation, the protein migrates to 50-55 kDa and 62-72 kDa based on Bis-Tris PAGE result.
Endotoxin	Less than 1EU per μg by the LAL method.
Purity	> 95% as determined by Bis-Tris PAGE > 95% as determined by HPLC

Formulation and Storage

Formulation	Supplied as 0.22 μm filtered solution in PBS (pH 7.4).
Storage	Valid for 12 months from date of receipt when stored at -80°C. Recommend to aliquot the protein into smaller quantities for optimal storage. Please minimize freeze-thaw cycles.

Background

Connective tissue growth factor (CTGF) is a member of the CCN matricellular protein family, consisting of four domains, that regulates the signaling of other growth factors and promotes kidney fibrosis. CTGF can simultaneously interact with several factors with its four domains. The microenvironment differs depending on the types of cells and tissues and differentiation stages of these cells.

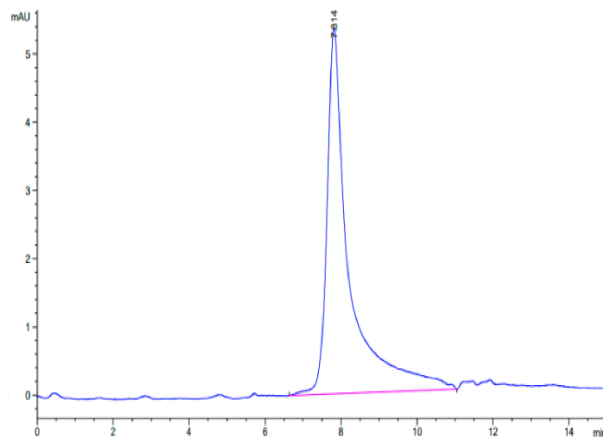
Assay Data

Bis-Tris PAGE



Human CTGF on Bis-Tris PAGE under reduced condition. The purity is greater than 95%.

SEC-HPLC

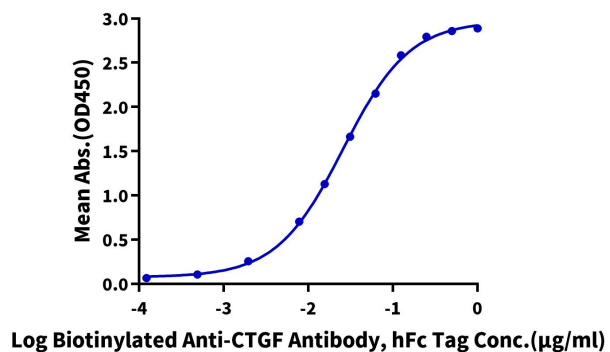


The purity of Human CTGF is greater than 95% as determined by SEC-HPLC.

Assay Data

ELISA Data

Human CTGF, hFc Tag ELISA
0.1µg Human CTGF, hFc Tag Per Well



Immobilized Human CTGF, hFc Tag at 1µg/ml (100µl/Well) on the plate. Dose response curve for Biotinylated Anti-CTGF Antibody, hFc Tag with the EC50 of 25.8ng/ml determined by ELISA (QC Test).