

Biotinylated Human CTGF/CCN2 Protein

Cat. No. CGF-HM401B

Description

Source	Recombinant Biotinylated Human CTGF/CCN2 Protein is expressed from Expi293 with His tag and Avi tag at the C-terminal. It contains Gln27-Ala349.
Accession	Q5M8T4-1
Molecular Weight	The protein has a predicted MW of 38.4 kDa. Due to glycosylation, the protein migrates to 43-53 kDa based on Tris-Bis PAGE result.
Endotoxin	Less than 1EU per µg by the LAL method.
Purity	> 95% as determined by Tris-Bis PAGE

Formulation and Storage

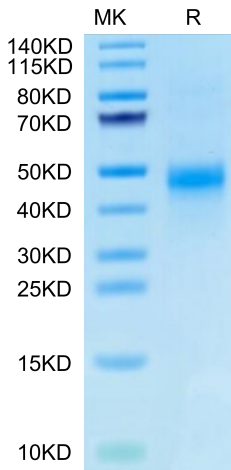
Formulation	Lyophilized from 0.22µm filtered solution in PBS (pH 7.4). Normally 8% trehalose is added as protectant before lyophilization.
Reconstitution	Centrifuge tubes before opening. Reconstituting to a concentration more than 100 µg/ml is recommended (usually we use 1mg/ml solution for lyophilization). Dissolve the lyophilized protein in distilled water.
Storage	-20 to -80°C for 12 months as supplied from date of receipt. -20 to -80°C for 3-6 months in unopened state after reconstitution. 2-8°C for 2-7 days after reconstitution. Recommend to aliquot the protein into smaller quantities for optimal storage. Please avoid freeze-thaw cycles.

Background

Connective tissue growth factor (CTGF) is a member of the CCN matricellular protein family, consisting of four domains, that regulates the signaling of other growth factors and promotes kidney fibrosis. CTGF can simultaneously interact with several factors with its four domains. The microenvironment differs depending on the types of cells and tissues and differentiation stages of these cells.

Assay Data

Tris-Bis PAGE



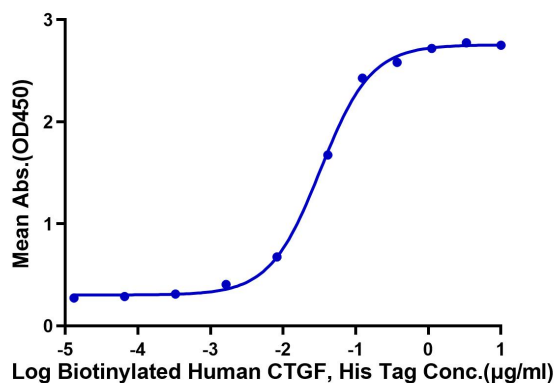
Biotinylated Human CTGF on Tris-Bis PAGE under reduced condition. The purity is greater than 95%.

ELISA Data

Assay Data

Biotinylated Human CTGF, His Tag ELISA

0.2µg Anti-CTGF Antibody, hFc Tag Per Well



Immobilized Anti-CTGF Antibody at 2µg/ml (100µl/well) on the plate. Dose response curve for Biotinylated Human CTGF, His Tag with the EC50 of 32.6ng/ml determined by ELISA.