

Human Claudin 18.2 Protein-VLP

Cat. No. CLD-HE1822



Description

Source	Human Claudin 18.2 Protein-VLP is expressed from HEK293. It contains Met1-Val261.
Accession	P56856-2
Molecular Weight	The target protein has a predicted MW of 29 kDa.
Endotoxin	Less than 1 EU per µg by the LAL method.
Purity	>95% as determined by HPLC

Formulation and Storage

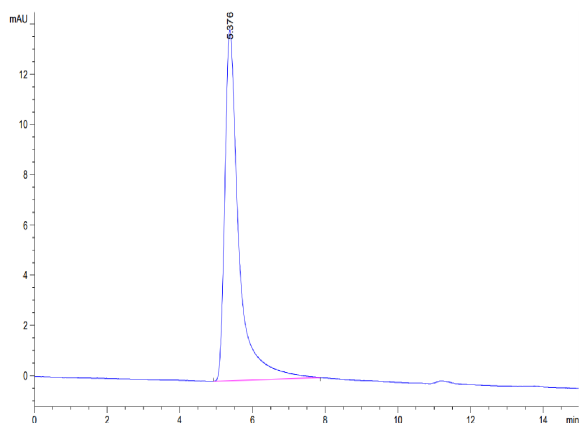
Formulation	Lyophilized from 0.22 µm filtered solution in PBS, 300 mM L-Arginine (pH 7.4). Normally 8% trehalose is added as protectant before lyophilization.
Reconstitution	Centrifuge the tube before opening. Reconstituting to a concentration more than 100 µg/ml is recommended. Dissolve the lyophilized protein in distilled water.
Storage	-20°C or lower for 12 months as supplied from date of receipt. Recommend to aliquot the protein into smaller quantities for optimal storage. Please minimize freeze-thaw cycles.

Background

Claudin18 (CLDN18) belongs to the large claudin family of proteins, which form tight junction strands in epithelial cells. CLDN18 is specifically expressed in the stomach and lung. CLDN18 has two alternatively spliced variants, CLDN18.1 and CLDN18.2. Isoform 2 (Claudin 18.2) is abundant in gastric tumors.

Assay Data

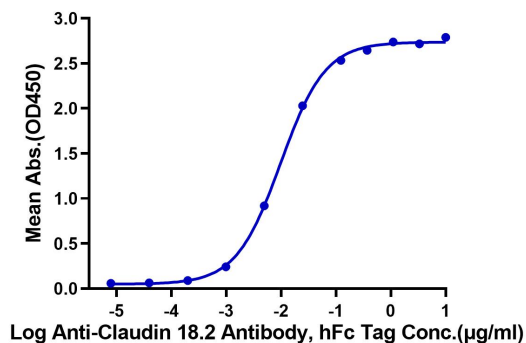
SEC-HPLC



The purity of Human Claudin 18.2 VLP is greater than 95% as determined by SEC-HPLC.

ELISA Data

Human Claudin 18.2 VLP ELISA
0.5µg Human Claudin 18.2 VLP Per Well



Immobilized Human Claudin 18.2 VLP at 5 µg/ml (100 µl/Well). Dose response curve for Anti-Claudin 18.2 Antibody, hFc Tag with the EC50 of 9.8 ng/ml determined by ELISA (QC Test).