

Biotinylated Human Claudin 18.2 Protein-VLP

Cat. No. CLD-HE1822B

Description

Source	Recombinant Biotinylated Full length Human Claudin 18.2 Protein-VLP is expressed from Expi293. It contains Met1-Val261.
Accession	P56856-2
Molecular Weight	The protein has a predicted MW of 29 kDa.
Endotoxin	Less than 1EU per µg by the LAL method.
Purity	> 95% as determined by HPLC

Formulation and Storage

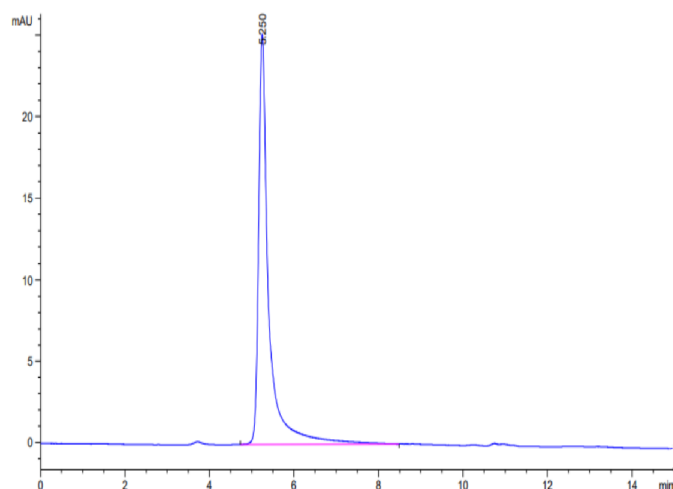
Formulation	Lyophilized from 0.22µm filtered solution in PBS (pH 7.4). Normally 8% trehalose is added as protectant before lyophilization. Notice: If you need it for immunization, Do Not use any adjuvant.
Reconstitution	Centrifuge tubes before opening. Redissolve with distilled water to 100µl.
Storage	-20 to -80°C for 12 months as supplied from date of receipt. -20 to -80°C for 3-6 months in unopened state after reconstitution. 2-8°C for 2-7 days after reconstitution. Recommend to aliquot the protein into smaller quantities for optimal storage. Please avoid freeze-thaw cycles.

Background

Claudin18(CLDN18) belongs to the large claudin family of proteins, which form tight junction strands in epithelial cells. CLDN18 is specifically expressed in the stomach and lung. CLDN18 has two alternatively spliced variants, CLDN18.1 and CLDN18.2. Isoform 2 (Claudin 18.2) is abundant in gastric tumors.

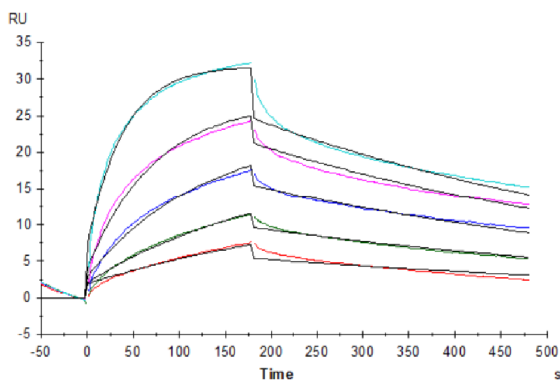
Assay Data

SEC-HPLC



The purity of Biotinylated Human Claudin 18.2 VLP is greater than 95% as determined by SEC-HPLC.

SPR Data



Biotinylated Human 18.2 VLP captured on SA Chip can bind Anti-18.2 Antibody with an affinity constant of 7.74 nM as determined in SPR assay (Biacore T200).