

# Human Fluorescent Claudin18.2 Protein-VLP (GFP)

Cat. No. CLD-HE1823

## Description

|                         |   |
|-------------------------|---|
| <b>Source</b>           | Human Fluorescent Claudin18.2 Protein-VLP (GFP) is expressed from HEK293.<br>It contains Met1-Val261. |
| <b>Accession</b>        | P56856-2  |
| <b>Molecular Weight</b> | The protein has a predicted MW of 29 kDa.   |
| <b>Endotoxin</b>        | Less than 1EU per µg by the LAL method.   |
| <b>Purity</b>           | > 95% as determined by HPLC   |

## Formulation and Storage

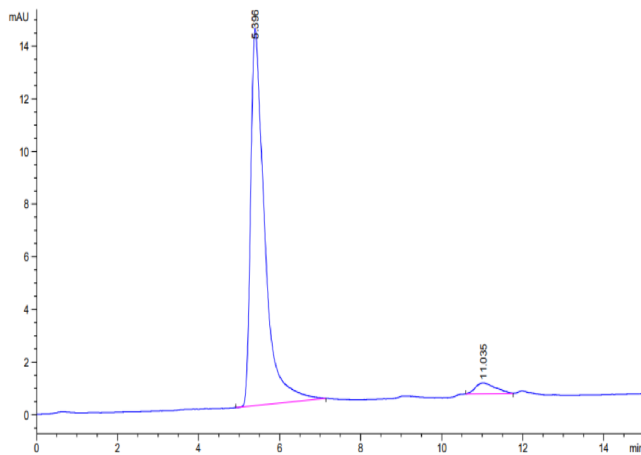
|                    |  |
|--------------------|--|
| <b>Formulation</b> | Supplied as 0.22µm filtered solution in PBS (pH 7.4).  |
| <b>Storage</b>     | Valid for 12 months from date of receipt when stored at -80°C. Recommend to aliquot the protein into smaller quantities for optimal storage. Please minimize freeze-thaw cycles. |

## Background

Claudin18 (CLDN18) belongs to the large claudin family of proteins, which form tight junction strands in epithelial cells. CLDN18 is specifically expressed in the stomach and lung. CLDN18 has two alternatively spliced variants, CLDN18.1 and CLDN18.2. Isoform 2 (Claudin 18.2) is abundant in gastric tumors.

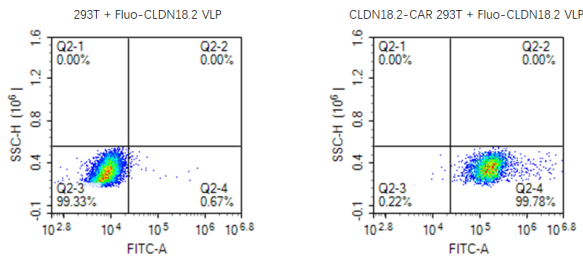
## Assay Data

### SEC-HPLC



The purity of Human Fluorescent Claudin18.2 VLP (GFP) is greater than 95% as determined by SEC-HPLC.

### FACS Data



Use 100µl fluorescent Human Claudin 18.2 VLP protein (2µg/ml) to detect the positive rate of anti-Claudin 18.2 CAR 293T cells. The normal 293T cells were served as negative control.