

Biotinylated Human Claudin 6 Protein-VLP

Cat. No. CLD-HM006B

Description

Source	Recombinant Biotinylated Full length Human Claudin 6 Protein-VLP is expressed from Expi293. It contains Met1-Val220.
Accession	P56747
Molecular Weight	The protein has a predicted MW of 24.5 kDa.
Endotoxin	Less than 1EU per µg by the LAL method.
Purity	> 95% as determined by HPLC

Formulation and Storage

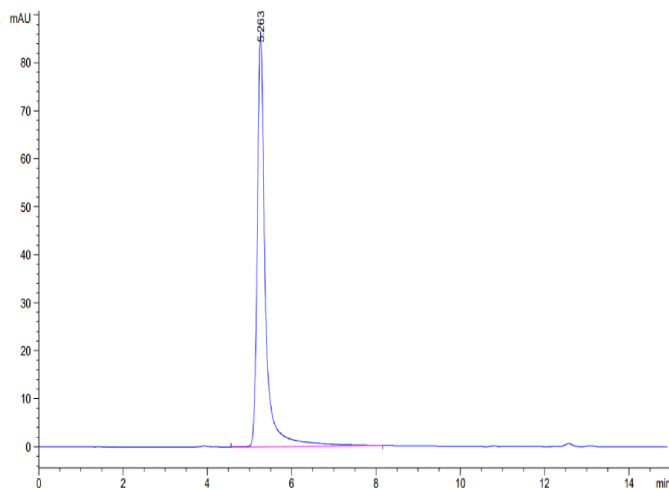
Formulation	Lyophilized from 0.22µm filtered solution in PBS (pH 7.4). Normally 8% trehalose is added as protectant before lyophilization. Notice: If you need it for immunization, Do Not use any adjuvant.
Reconstitution	Centrifuge tubes before opening. Redissolve with distilled water to 100µl.
Storage	-20 to -80°C for 12 months as supplied from date of receipt. -20 to -80°C for 3-6 months in unopened state after reconstitution. 2-8°C for 2-7 days after reconstitution. Recommend to aliquot the protein into smaller quantities for optimal storage. Please avoid freeze-thaw cycles.

Background

Claudin-6 is a multipass transmembrane protein in the Claudin family. Claudin-6 is expressed by epithelial cells where it participates in tissue development and the maintenance of tight junction integrity. Human Claudin-6 shares 88% and 86% amino acid sequence identity with mouse and rat Claudin-6, respectively.

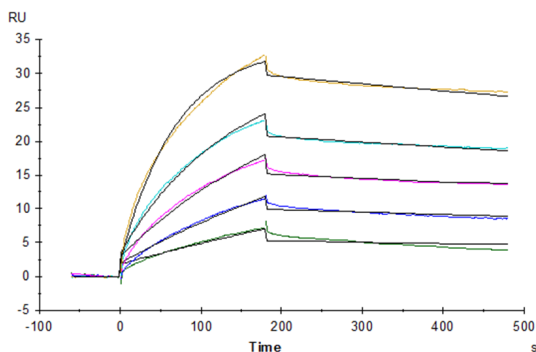
Assay Data

SEC-HPLC



The purity of Biotinylated Human Claudin 6 VLP is greater than 95% as determined by SEC-HPLC.

SPR Data



Biotinylated Human Claudin 6 VLP captured on CM5 Chip via Streptavidin can bind Anti-Claudin6 Antibody with an affinity constant of 0.65 nM as determined in SPR assay (Biacore T200).