

Cat. No. CLD-HM10N

Description	
Source	Recombinant FITC-equivalent Human Claudin 18.2 Protein-Nanodisc is expressed from HEK293 with His tag at the N-terminus. It contains Met1-Val261.
Accession	P56856-2
Molecular Weight	The protein has a predicted MW of 49.10 kDa.
Wavelength	Excitation Wavelength: 490 nm Emission Wavelength: 520 nm
Endotoxin	Less than 1EU per µg by the LAL method.

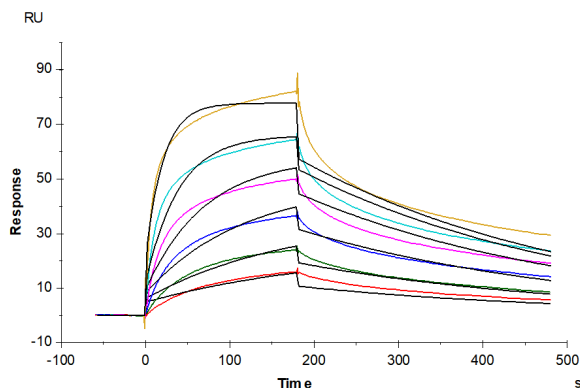
Formulation and Storage	
Formulation	Supplied as 0.22 µm filtered solution in PBS (pH 7.4). Notice: Not recommended for immunization.
Storage	Valid for 12 months from date of receipt when stored at -80°C. Recommend to aliquot the protein into smaller quantities for optimal storage. Please minimize freeze-thaw cycles.

**Background**

Claudin18 (CLDN18) belongs to the large claudin family of proteins, which form tight junction strands in epithelial cells. CLDN18 is specifically expressed in the stomach and lung. CLDN18 has two alternatively spliced variants, CLDN18.1 and CLDN18.2. Isoform 2 (Claudin 18.2) is abundant in gastric tumors.

**Assay Data**

**SPR Data**



FITC-equivalent Human Claudin 18.2 Nanodisc, His Tag captured on CM5 Chip via Anti-His Antibody can bind Anti-Claudin18.2 Antibody with an affinity constant of 6.63 nM as determined in SPR assay (Biacore T200).