

Biotinylated Human Claudin 18.2 Protein-Nanodisc



Cat. No. CLD-HM40NB

Description	
Source	Recombinant Biotinylated Human Claudin 18.2 Protein-Nanodisc is expressed from HEK293 with His tag at the N-terminus and Avi tag at the C-terminus. It contains Met1-Val261.
Accession	P56856-2
Molecular Weight	The protein has a predicted MW of 39.90 kDa.
Endotoxin	Less than 1EU per µg by the LAL method.

Formulation and Storage	
Formulation	Supplied as 0.22 µm filtered solution in PBS (pH 7.4). Notice: Not recommended for flow cytometry in mammalian cells.
Storage	Valid for 12 months from date of receipt when stored at -80°C. Recommend to aliquot the protein into smaller quantities for optimal storage. Please minimize freeze-thaw cycles.

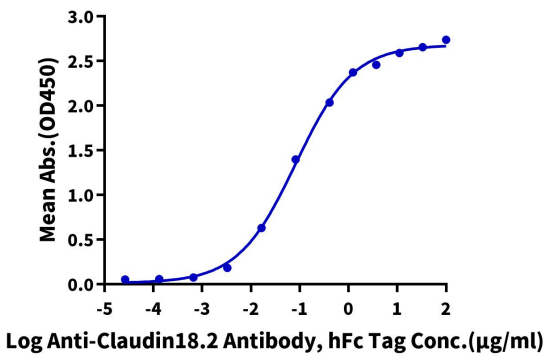
Background	
Claudin18 (CLDN18) belongs to the large claudin family of proteins, which form tight junction strands in epithelial cells. CLDN18 is specifically expressed in the stomach and lung. CLDN18 has two alternatively spliced variants, CLDN18.1 and CLDN18.2. Isoform 2 (Claudin 18.2) is abundant in gastric tumors.	

Assay Data

ELISA Data

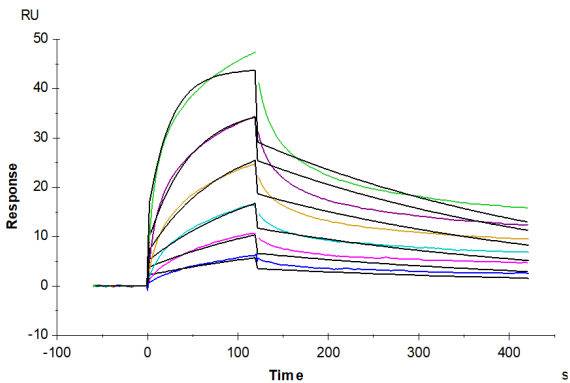
Biotinylated Human Claudin 18.2 Nanodisc, His Tag ELISA

0.5µg Biotinylated Human Claudin 18.2 Nanodisc, His Tag Per Well



Immobilized Biotinylated Human Claudin 18.2 Nanodisc, His Tag at 5µg/ml (100µl/well) on the streptavidin precoated plate (5µg/ml). Dose response curve for Anti-Claudin 18.2 Antibody, hFc Tag with the EC50 of 82.2ng/ml determined by ELISA (QC Test).

SPR Data



Biotinylated Human Claudin 18.2 Nanodisc captured on CM5 Chip via Streptavidin can bind Anti-Claudin18.2 Antibody with an affinity constant of 7.28 nM as determined in SPR assay (Biacore T200).