

# Mouse Claudin 6 Protein-VLP

Cat. No. CLD-MM006

## Description

<b>Source</b>	Recombinant Mouse Claudin 6 Protein-VLP is expressed from Expi293. It contains Met1-Val219.
<b>Accession</b>	Q9Z262
<b>Molecular Weight</b>	The target protein has a predicted MW of 24.60 kDa.
<b>Endotoxin</b>	Less than 1EU per µg by the LAL method.
<b>Purity</b>	> 95% as determined by HPLC

## Formulation and Storage

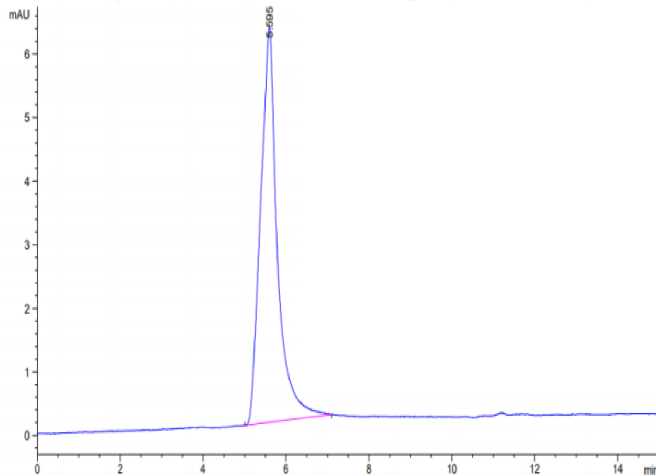
<b>Formulation</b>	Lyophilized from 0.22µm filtered solution in PBS (pH 7.4). Normally 8% trehalose is added as protectant before lyophilization.
<b>Reconstitution</b>	Centrifuge tubes before opening. Reconstituting to a concentration more than 100 µg/ml is recommended. Dissolve the lyophilized protein in distilled water.
<b>Storage</b>	-80°C for 12 months as supplied from date of receipt. 2-8°C for 2-7 days after reconstitution. Recommend to aliquot the protein into smaller quantities for optimal storage. Please avoid freeze-thaw cycles.

## Background

Claudin-6 is a multipass transmembrane protein in the Claudin family. Claudin-6 is expressed by epithelial cells where it participates in tissue development and the maintenance of tight junction integrity. Human Claudin-6 shares 88% and 86% amino acid sequence identity with mouse and rat Claudin-6, respectively.

## Assay Data

### SEC-HPLC

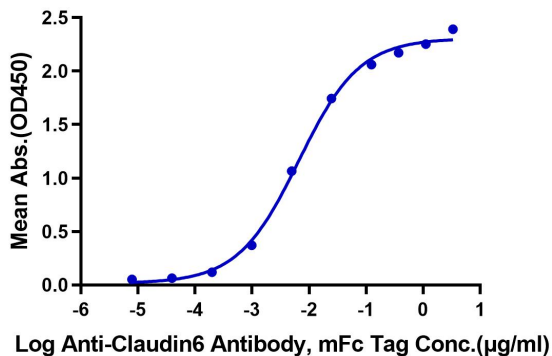


The purity of Mouse Claudin 6 VLP is greater than 95% as determined by SEC-HPLC.

### ELISA Data

#### Mouse Claudin 6 VLP ELISA

0.5µg Mouse Claudin 6 VLP Per Well



Immobilized Mouse Claudin 6 VLP at 5µg/ml (100µl/Well) on the plate. Dose response curve for Anti-Claudin6 Antibody, mFc Tag with the EC50 of 6.6ng/ml determined by ELISA.