

FITC-equivalent Human Claudin 3 Protein-VLP

Cat. No. CLD3-HM0P96

Description

Source	Recombinant FITC-equivalent Human Claudin 3 Protein-VLP is expressed from HEK293. It contains Met1-Val220.
Accession	O15551
Molecular Weight	The target protein has a predicted MW of 47.6 kDa.
Wavelength	Excitation Wavelength: 490 nm Emission Wavelength: 520 nm
Endotoxin	Less than 1EU per μg by the LAL method.
Purity	>95% as determined by HPLC

Formulation and Storage

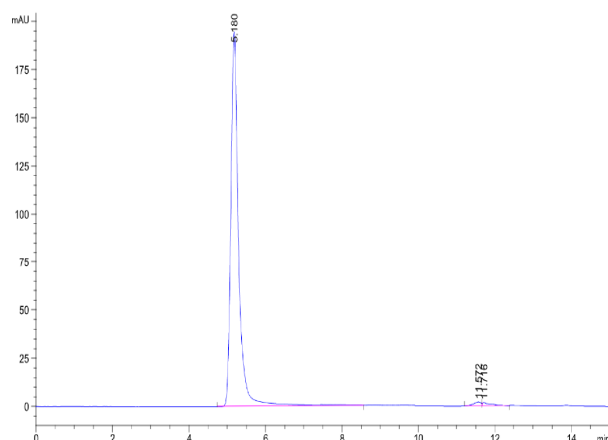
Formulation	Supplied as 0.22 μm filtered solution in PBS, 150mM L-Arginine (pH 7.4). Notice: If you need it for immunization, water-soluble adjuvant is recommended.
Storage	Valid for 12 months from date of receipt when stored at -80°C . Recommend to aliquot the protein into smaller quantities for optimal storage. Please minimize freeze-thaw cycles.

Background

Claudin-3 is a member of the Claudin family, which is present in many epithelia including skin, lung, kidney and intestine. It beautifully localizes on the cell-to-cell junctions of MCF-7 cells, clearly forming a continuous belt-like structure surrounding the cells. It has often been associated with the progression and metastasis of various tumors.

Assay Data

SEC-HPLC

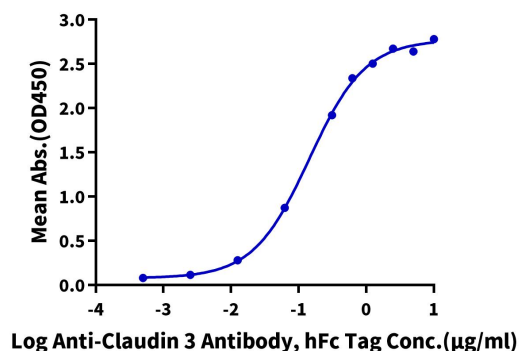


The purity of FITC-equivalent Human Claudin 3 VLP is greater than 95% as determined by SEC-HPLC.

ELISA Data

FITC-equivalent Human Claudin 3 VLP ELISA

0.5 μg FITC-equivalent Human Claudin 3 VLP Per Well



Immobilized FITC-equivalent Human Claudin 3 VLP at 5 $\mu\text{g}/\text{ml}$ (100 $\mu\text{l}/\text{well}$) on the plate. Dose response curve for Anti-Claudin 3 Antibody, hFc Tag with the EC50 of 0.14 $\mu\text{g}/\text{ml}$ determined by ELISA (QC Test).