

Human Claudin 4 Protein-Nanodisc

Cat. No. CLD4-HM1N161



Description

Source	Recombinant Human Claudin 4 Protein-Nanodisc is expressed from HEK293 with His tag at the C-terminus. It contains Met1-Val209.
Accession	O14493
Molecular Weight	The protein has a predicted MW of 23.31 kDa.
Endotoxin	Less than 1EU per μg by the LAL method.

Formulation and Storage

Formulation	Supplied as 0.22 μm filtered solution in PBS (pH 7.4). Notice: Not recommended for immunization and flow cytometry in mammalian cells.
Storage	Valid for 12 months from date of receipt when stored at -80°C . Recommend to aliquot the protein into smaller quantities for optimal storage. Please minimize freeze-thaw cycles.

Background

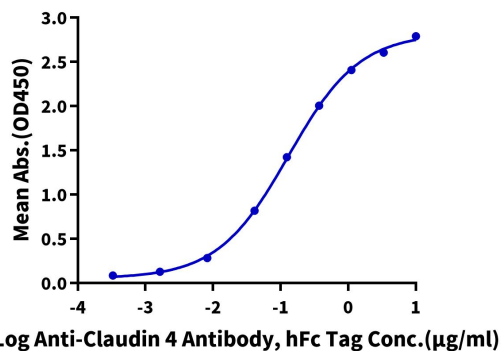
Claudin-4 (CLDN4) is a key component of tight junctions (TJs) in epithelial cells. CLDN4 is overexpressed in many epithelial malignancies and correlates with cancer progression. Changes in CLDN4 expression have been associated with epigenetic factors (such as hypomethylation of promoter DNA), inflammation associated with infection and cytokines, and growth factor signaling. CLDN4 helps to maintain the tumor microenvironment by forming TJs and acts as a barrier to the entry of anticancer drugs into tumors.

Assay Data

ELISA Data

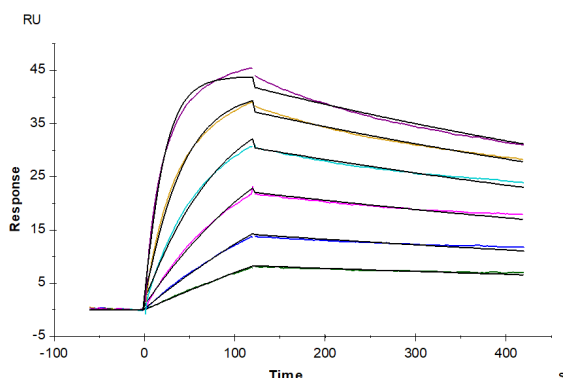
Human Claudin 4 Nanodisc, His Tag ELISA

0.5 μg Human Claudin 4 Nanodisc, His Tag Per Well



Immobilized Human Claudin 4 Nanodisc, His Tag at 5 $\mu\text{g}/\text{ml}$ (100 $\mu\text{l}/\text{well}$) on the plate. Dose response curve for Anti-Claudin 4 Antibody, hFc Tag with the EC_{50} of 0.13 $\mu\text{g}/\text{ml}$ determined by ELISA (QC Test).

SPR Data



Human Claudin 4 Nanodisc, His Tag captured on CM5 Chip via Ant-His Antibody can bind Anti-Claudin 4 Antibody, hFc Tag with an affinity constant of 3.82 nM as determined in SPR assay (Biacore T200).