

# Human CLEC4A/DCIR Protein

Cat. No. CLE-HM141



## Description

<b>Source</b>	Recombinant Human CLEC4A/DCIR Protein is expressed from HEK293 with His tag at the C-terminus. It contains Gln70-Leu237.
<b>Accession</b>	Q9UMR7-1
<b>Molecular Weight</b>	The protein has a predicted MW of 21.47 kDa. Due to glycosylation, the protein migrates to 27-35 kDa based on Bis-Tris PAGE result.
<b>Endotoxin</b>	Less than 1EU per $\mu\text{g}$ by the LAL method.
<b>Purity</b>	>95% as determined by Bis-Tris PAGE >95% as determined by HPLC

## Formulation and Storage

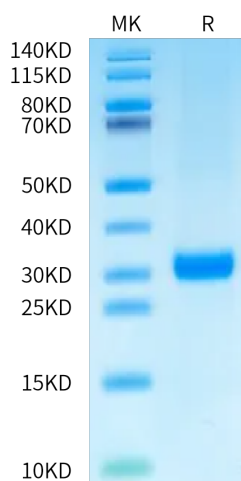
<b>Formulation</b>	Supplied as 0.22 $\mu\text{m}$ filtered solution in PBS (pH 7.4).
<b>Storage</b>	Valid for 12 months from date of receipt when stored at $-80^{\circ}\text{C}$ . Recommend to aliquot the protein into smaller quantities for optimal storage. Please minimize freeze-thaw cycles.

## Background

Clec4a has been reported to be an immune suppressor of dendritic cells (DCs), but its potential role in cancer therapy remains to be elucidated. silencing of Clec4a2 expression via skin delivery of shRNA produces an effective antitumor response and that Clec4a2 shRNA may have therapeutic potential as an adjuvant for cancer immunotherapy.

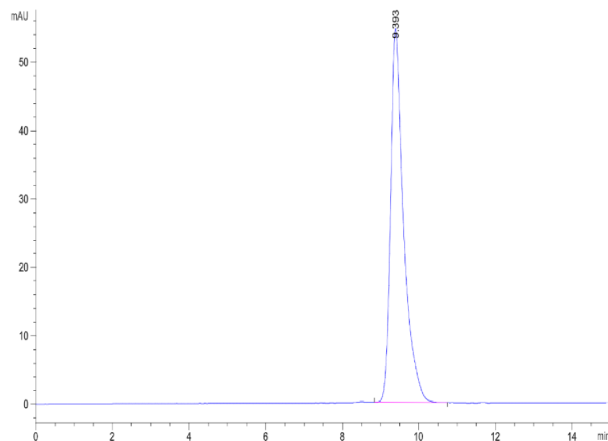
## Assay Data

### Bis-Tris PAGE



Human CLEC4A on Bis-Tris PAGE under reduced condition. The purity is greater than 95%.

### SEC-HPLC



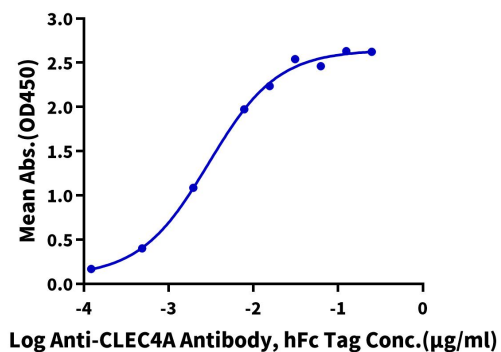
The purity of Human CLEC4A is greater than 95% as determined by SEC-HPLC.

Assay Data

ELISA Data

**Human CLEC4A, His Tag ELISA**

0.05µg Human CLEC4A, His Tag Per Well



Immobilized Human CLEC4A, His Tag at 0.5µg/ml (100µl/well) on the plate. Dose response curve for Anti-CLEC4A Antibody, hFc Tag with the EC50 of 3.0ng/ml determined by ELISA (QC Test).