

# Human CLEC14A Protein

Cat. No. CLE-HM14A

## Description

<b>Source</b>	Recombinant Human CLEC14A Protein is expressed from HEK293 with His tag at the C-Terminus. It contains Glu22-Ala397.
<b>Accession</b>	Q86T13
<b>Molecular Weight</b>	The protein has a predicted MW of 40.94 kDa. Due to glycosylation, the protein migrates to 70-80 kDa based on Bis-Tris PAGE result.
<b>Endotoxin</b>	Less than 1EU per $\mu\text{g}$ by the LAL method.
<b>Purity</b>	> 95% as determined by Bis-Tris PAGE > 95% as determined by HPLC

## Formulation and Storage

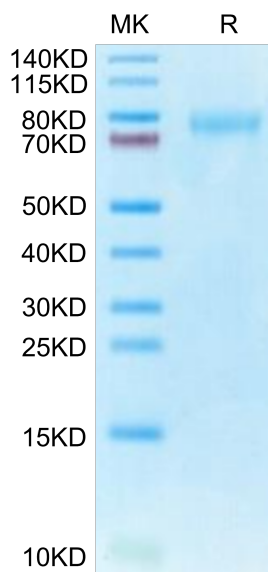
<b>Formulation</b>	Supplied as 0.22 $\mu\text{m}$ filtered solution in PBS (pH 7.4).
<b>Storage</b>	Valid for 12 months from date of receipt when stored at -80°C. Recommend to aliquot the protein into smaller quantities for optimal storage. Please minimize freeze-thaw cycles.

## Background

CLEC14A is a single-pass transmembrane glycoprotein belonging to the vascular expressed C-type lectin family. CLEC14A is found to be expressed in vascular endothelial cells during embryogenesis and is also implicated in tumor angiogenesis.

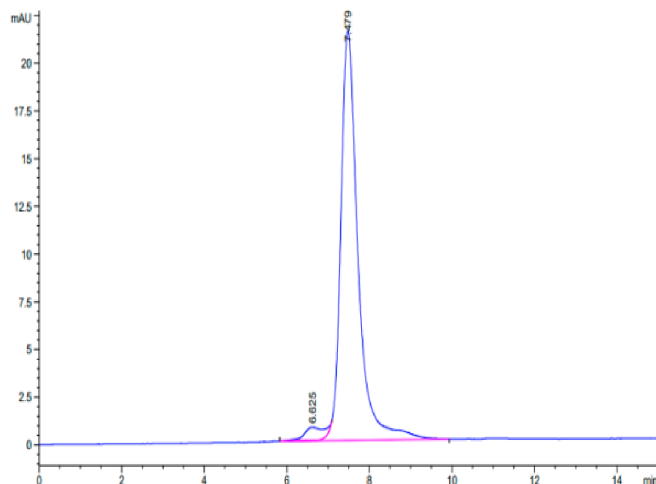
## Assay Data

### Bis-Tris PAGE



Human CLEC14A on Bis-Tris PAGE under reduced condition. The purity is greater than 95%.

### SEC-HPLC



The purity of Human CLEC14A is greater than 95% as determined by SEC-HPLC.