

Human CLEC-1 Protein

Cat. No. CLE-HM201

Description

Source	Recombinant Human CLEC-1 Protein is expressed from HEK293 with hFc tag at the N-Terminus. It contains Gln74-Asp280.
Accession	Q8NC01
Molecular Weight	The protein has a predicted MW of 51.2 kDa. Due to glycosylation, the protein migrates to 60-70 kDa based on Bis-Tris PAGE result.
Endotoxin	Less than 1EU per μg by the LAL method.
Purity	> 95% as determined by Bis-Tris PAGE

Formulation and Storage

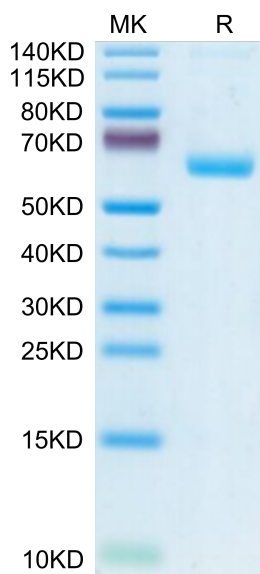
Formulation	Supplied as 0.22 μm filtered solution in PBS (pH 7.4).
Storage	Valid for 12 months from date of receipt when stored at -80°C . Recommend to aliquot the protein into smaller quantities for optimal storage. Please minimize freeze-thaw cycles.

Background

C-type lectin-like receptor-1 (CLEC-1) is a member of the Dectin-1 cluster of pattern recognition receptors (PRRs). It is involved in host immunity, has immunoregulatory function, and supports allograft tolerance. CLEC-1 may act as a negative regulator of Dectin-1 induced host inflammatory response via suppressing neutrophils recruitment and production of pro-inflammatory cytokine IL-1 β production in response to *A. fumigatus* keratitis.

Assay Data

Bis-Tris PAGE

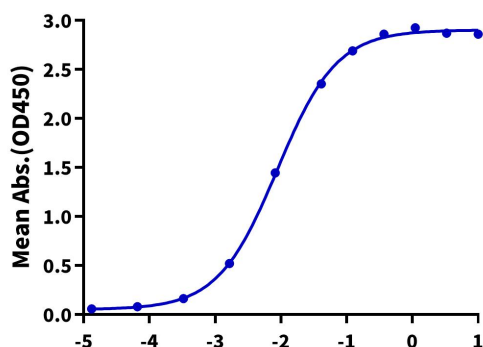


Human CLEC-1 on Bis-Tris PAGE under reduced condition. The purity is greater than 95%.

ELISA Data

Human CLEC-1, hFc Tag ELISA

0.05 μg Human CLEC-1, hFc Tag Per Well



Immobilized Human CLEC-1, hFc Tag at 0.5 $\mu\text{g}/\text{ml}$ (100 μl /Well) on the plate. Dose response curve for Biotinylated Anti-CLEC-1 Antibody, hFc Tag with the EC50 8.8ng/ml determined by ELISA.