

Human CLEC12A/MICL/CLL-1 Protein

Cat. No. CLE-HM22A

Description

Source	Recombinant Human CLEC12A/MICL/CLL-1 Protein is expressed from HEK293 with hFc tag at the N-Terminus. It contains His65-Ala265.
Accession	Q5QGZ9-2
Molecular Weight	The protein has a predicted MW of 50.9 kDa. Due to glycosylation, the protein migrates to 68-73 kDa based on Bis-Tris PAGE result.
Endotoxin	Less than 1EU per μg by the LAL method.
Purity	> 95% as determined by Bis-Tris PAGE > 95% as determined by HPLC

Formulation and Storage

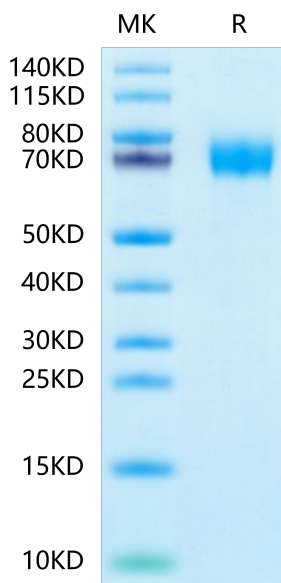
Formulation	Lyophilized from 0.22 μm filtered solution in PBS (pH 7.4). Normally 8% trehalose is added as protectant before lyophilization.
Reconstitution	Centrifuge the tube before opening. Reconstituting to a concentration more than 100 $\mu\text{g}/\text{ml}$ is recommended. Dissolve the lyophilized protein in distilled water.
Storage	-20 to -80°C for 12 months as supplied from date of receipt. -80°C for 3-6 months after reconstitution. 2-8°C for 2-7 days after reconstitution. Recommend to aliquot the protein into smaller quantities for optimal storage. Please minimize freeze-thaw cycles.

Background

CLEC12A has recently been identified as an antigen, expressed on leukemic stem cells and leukemic blasts. Given the fact that this expression profile seems stable throughout diagnosis, treatment and relapse on leukemic blasts and leukemic stem cells, CLEC12A can be considered a highly potent and reliable marker for the detection of measurable residual disease and therefore applicable for risk stratification and prognostication in AML.

Assay Data

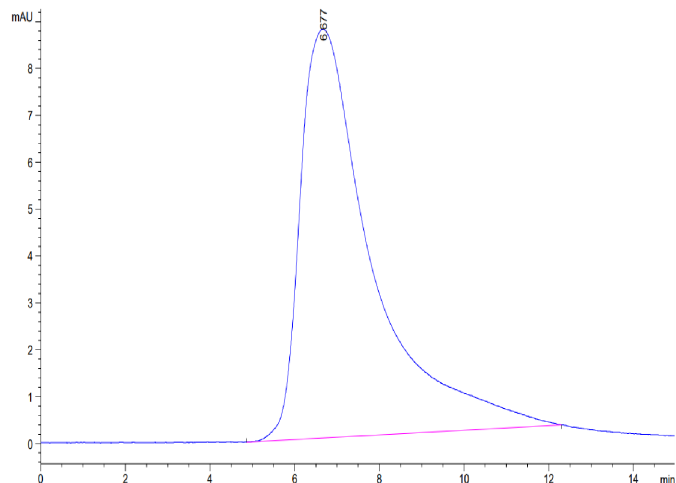
Bis-Tris PAGE



Human CLEC12A on Bis-Tris PAGE under reduced condition. The purity is greater than 95%.

SEC-HPLC

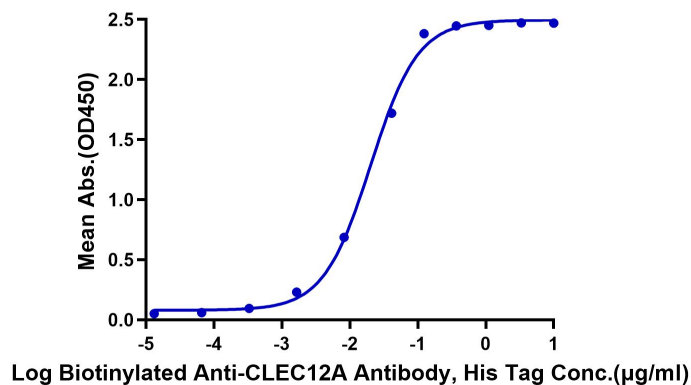
Assay Data



The purity of Human CLEC12A is greater than 95% as determined by SEC-HPLC.

ELISA Data

Human CLEC12A, hFc Tag ELISA
0.05µg Human CLEC12A, hFc Tag Per Well



Immobilized Human CLEC12A, hFc Tag at 0.5µg/ml (100µl/Well) on the plate. Dose response curve for Biotinylated Anti-CLEC12A Antibody, hFc Tag with the EC50 of 20.2ng/ml determined by ELISA.