

Human CLEC4A/DCIR Protein

Cat. No. CLE-HM24A

Description

Source	Recombinant Human CLEC4A/DCIR Protein is expressed from HEK293 with hFc tag at the C-Terminus. It contains Gln70-Leu237.
Accession	Q9UMR7-1
Molecular Weight	The protein has a predicted MW of 46.7 kDa. Due to glycosylation, the protein migrates to 60-65 kDa based on Bis-Tris PAGE result.
Endotoxin	Less than 1EU per μg by the LAL method.
Purity	> 95% as determined by Bis-Tris PAGE > 95% as determined by HPLC

Formulation and Storage

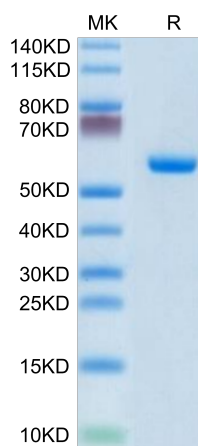
Formulation	Lyophilized from 0.22 μm filtered solution in PBS (pH 7.4). Normally 8% trehalose is added as protectant before lyophilization.
Reconstitution	Centrifuge the tube before opening. Reconstituting to a concentration more than 100 $\mu\text{g}/\text{ml}$ is recommended. Dissolve the lyophilized protein in distilled water.
Storage	-20 to -80°C for 24 months as supplied from date of receipt. -80°C for 3 months after reconstitution. Recommend to aliquot the protein into smaller quantities for optimal storage. Please minimize freeze-thaw cycles.

Background

Clec4a has been reported to be an immune suppressor of dendritic cells (DCs), but its potential role in cancer therapy remains to be elucidated. silencing of Clec4a2 expression via skin delivery of shRNA produces an effective antitumor response and that Clec4a2 shRNA may have therapeutic potential as an adjuvant for cancer immunotherapy.

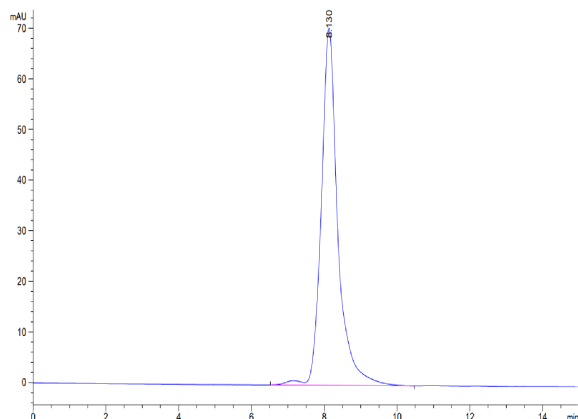
Assay Data

Bis-Tris PAGE



Human CLEC4A on Bis-Tris PAGE under reduced condition. The purity is greater than 95%.

SEC-HPLC



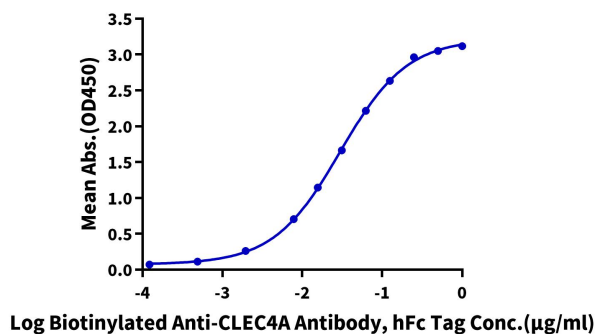
The purity of Human CLEC4A is greater than 95% as determined by SEC-HPLC.

Assay Data

ELISA Data

Human CLEC4A, hFc Tag ELISA

0.1 μ g Human CLEC4A, hFc Tag Per Well



Immobilized Human CLEC4A, hFc Tag at 1 μ g/ml (100 μ l/Well) on the plate. Dose response curve for Biotinylated Anti-CLEC4A Antibody, hFc Tag with the EC50 of 29.8ng/ml determined by ELISA.