

Human CLEC7A Protein

Cat. No. CLE-HM27A

Description

Source	Recombinant Human CLEC7A Protein is expressed from Expi293 with hFc tag at the N-terminal. It contains Thr66-Met201.
Accession	Q9BXN2-2
Molecular Weight	The protein has a predicted MW of 41.79 kDa. Due to glycosylation, the protein migrates to 45-50 kDa based on Tris-Bis PAGE result.
Endotoxin	Less than 1EU per μg by the LAL method.
Purity	> 95% as determined by Tris-Bis PAGE > 95% as determined by HPLC

Formulation and Storage

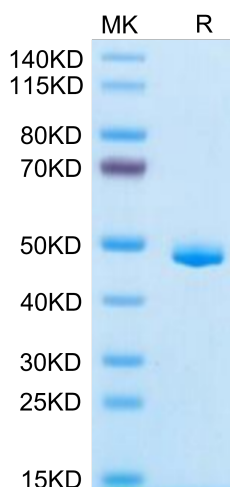
Formulation	Supplied as 0.22 μm filtered solution in PBS (pH 7.4). Please dilute to the desired concentration according to the concentration of the solution shown on the product label.
Storage	Valid for 12 months from date of receipt when stored at -80°C . Recommend to aliquot the protein into smaller quantities for optimal storage. Please do not repeated freeze-thaw cycles.

Background

Dendritic cell-associated C-type lectin-1 (Dectin-1), also known as β -glucan receptor is an emerging pattern recognition receptor (PRR) which belongs to the family of C-type lectin receptor (CLR). Dectin-1 signaling axis has been suggested to be targeted as an effective therapeutic strategy for cancers. Dectin-1 has also been elucidated ascetically in the heart, respiratory, intestinal, neurological and developmental disorders.

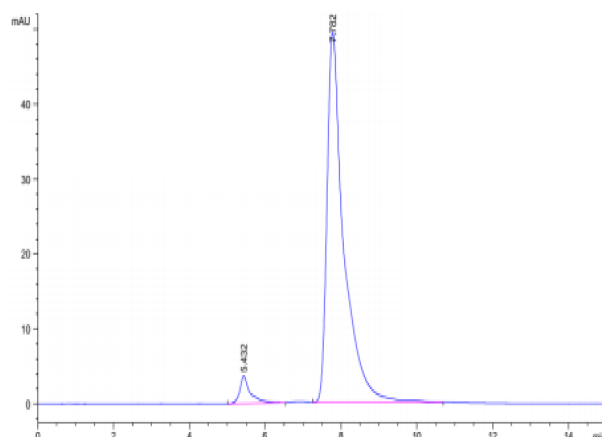
Assay Data

Tris-Bis PAGE



Human CLEC7A on Tris-Bis PAGE under reduced condition. The purity is greater than 95%.

SEC-HPLC



The purity of Human CLEC7A is greater than 95% as determined by SEC-HPLC.