

# Human CLEC9A Protein

Cat. No. CLE-HM29A

## Description

<b>Source</b>	Recombinant Human CLEC9A Protein is expressed from HEK293 with hFc tag at the N-Terminus. It contains Lys57-Val241.
<b>Accession</b>	Q6UXN8
<b>Molecular Weight</b>	The protein has a predicted MW of 48.5 kDa. Due to glycosylation, the protein migrates to 55-65 kDa based on Bis-Tris PAGE result.
<b>Endotoxin</b>	Less than 1EU per $\mu\text{g}$ by the LAL method.
<b>Purity</b>	> 95% as determined by Bis-Tris PAGE > 95% as determined by HPLC

## Formulation and Storage

<b>Formulation</b>	Supplied as 0.22 $\mu\text{m}$ filtered solution in PBS (pH 7.4).
<b>Storage</b>	Valid for 12 months from date of receipt when stored at -80°C. Recommend to aliquot the protein into smaller quantities for optimal storage. Please minimize freeze-thaw cycles.

## Background

CLEC9A is a recently discovered C-type lectin receptor involved in sensing necrotic cells. In humans, this receptor is selectively expressed by BDCA3(+) myeloid dendritic cells (mDCs), which have been proposed to be the main human cross-presenting mDCs and may represent the human homologue of murine CD8(+) DCs. In mice, it was demonstrated that antigens delivered with antibodies to CLEC9A are presented by CD8(+) DCs to both CD4(+) and CD8(+) T cells and induce antitumor immunity in a melanoma model.

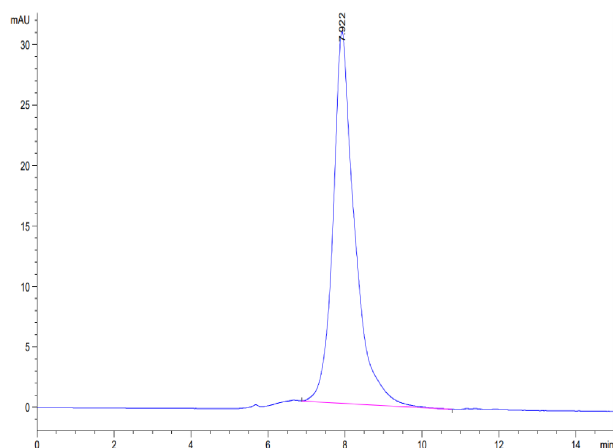
## Assay Data

### Bis-Tris PAGE



Human CLEC9A on Bis-Tris PAGE under reduced condition. The purity is greater than 95%.

### SEC-HPLC



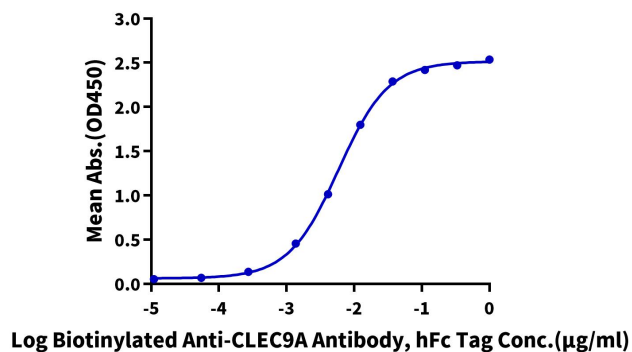
The purity of Human CLEC9A is greater than 95% as determined by SEC-HPLC.

Assay Data

ELISA Data

**Human CLEC9A, hFc Tag ELISA**

0.05µg Human CLEC9A, hFc Tag Per Well



Immobilized Human CLEC9A, hFc Tag at 0.5µg/ml (100µl/Well) on the plate. Dose response curve for Biotinylated Anti-CLEC9A Antibody, hFc Tag with the EC50 of 5.9ng/ml determined by ELISA.