

# Human CLEC9A Protein

Cat. No. CLE-HM29A



## Description

Source	Recombinant Human CLEC9A Protein is expressed from HEK293 with hFc tag at the N-Terminus.
	It contains Lys57-Val241.
Accession	Q6UXN8
Molecular Weight	The protein has a predicted MW of 48.5 kDa. Due to glycosylation, the protein migrates to 55-65 kDa based on Bis-Tris PAGE result.
Endotoxin	Less than 1 EU per µg by the LAL method.
Purity	> 95% as determined by Bis-Tris PAGE
	> 95% as determined by HPLC

## Formulation and Storage

Formulation	Lyophilized from 0.22µm filtered solution in PBS (pH 7.4). Normally 8% trehalose is added as protectant before lyophilization.
Reconstitution	Dissolve the lyophilized protein in distilled water. Please refer to the Certificate of Analysis for detailed instructions.
Storage	-20 to -80°C for 12 months as supplied from date of receipt. -80°C for 3 months after reconstitution. Recommend to aliquot the protein into smaller quantities for optimal storage. Please minimize freeze-thaw cycles.

## Background

CLEC9A is a recently discovered C-type lectin receptor involved in sensing necrotic cells. In humans, this receptor is selectively expressed by BDCA3(+) myeloid dendritic cells (mDCs), which have been proposed to be the main human cross-presenting mDCs and may represent the human homologue of murine CD8(+) DCs. In mice, it was demonstrated that antigens delivered with antibodies to CLEC9A are presented by CD8(+) DCs to both CD4(+) and CD8(+) T cells and induce antitumor immunity in a melanoma model.

## Assay Data

### Bis-Tris PAGE



Human CLEC9A on Bis-Tris PAGE under reduced condition. The purity is greater than 95%.

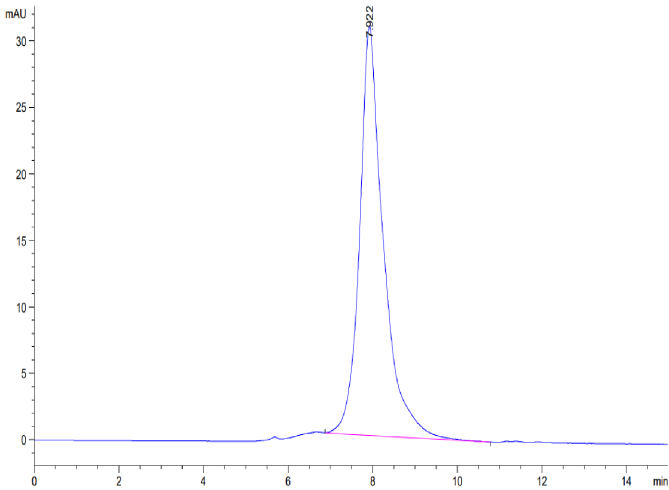
### SEC-HPLC

Human CLEC9A Protein

Cat. No. CLE-HM29A



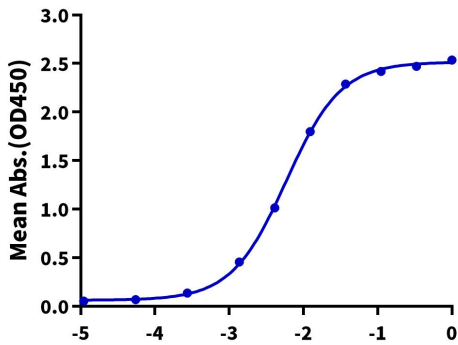
Assay Data



The purity of Human CLEC9A is greater than 95% as determined by SEC-HPLC.

ELISA Data

**Human CLEC9A, hFc Tag ELISA**  
0.05µg Human CLEC9A, hFc Tag Per Well



Immobilized Human CLEC9A, hFc Tag at 0.5µg/ml (100µl/Well) on the plate. Dose response curve for Biotinylated Anti-CLEC9A Antibody, hFc Tag with the EC50 of 5.9ng/ml determined by ELISA.