

Biotinylated Human CLEC9A Protein (Primary Amine Labeling)

Cat. No. CLE-HM29AB

Description

Source	Recombinant Biotinylated Human CLEC9A Protein (Primary Amine Labeling) is expressed from HEK293 with hFc tag at the N-terminus. It contains Lys57-Val241.
Accession	Q6UXN8
Molecular Weight	The protein has a predicted MW of 48.5 kDa. Due to glycosylation, the protein migrates to 55-70 kDa based on Bis-Tris PAGE result.
Endotoxin	Less than 1EU per µg by the LAL method.
Purity	> 95% as determined by Bis-Tris PAGE > 90% as determined by HPLC

Formulation and Storage

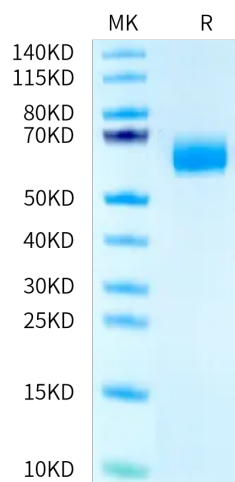
Formulation	Supplied as 0.22 µm filtered solution in PBS, 100mM L-arginine (pH 7.4).
Storage	Valid for 12 months from date of receipt when stored at -80°C. Recommend to aliquot the protein into smaller quantities for optimal storage. Please minimize freeze-thaw cycles.

Background

CLEC9A expression was significantly higher in psoriatic skin compared with healthy donor. In psoriatic skin and PsA ST, CLEC9A(+) cells were in close proximity to TUNEL(+) cells. SF CLEC9A levels were significantly lower compared with paired PsA serum. Adalimumab treatment did not affect CLEC9A serum level and skin expression. The downregulation of synovial CLEC9A might be associated with a novel mechanism by which anti-TNF therapy might reduce CD8-mediated inflammation in PsA patients.

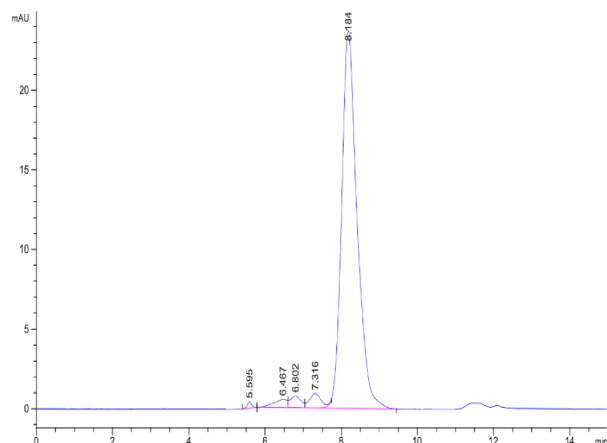
Assay Data

Bis-Tris PAGE



Biotinylated Human CLEC9A on Bis-Tris PAGE under reduced condition. The purity is greater than 95%.

SEC-HPLC



The purity of Biotinylated Human CLEC9A is greater than 90% as determined by SEC-HPLC.

Biotinylated Human CLEC9A Protein (Primary Amine Labeling)

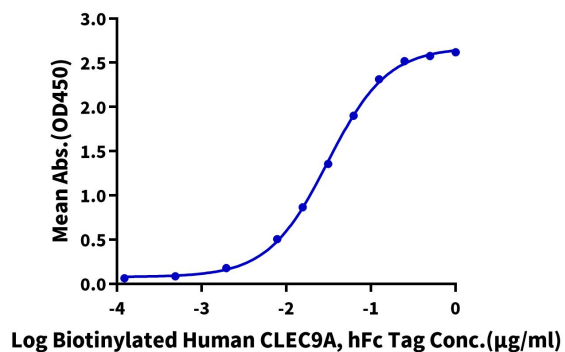
Cat. No. CLE-HM29AB

Assay Data

ELISA Data

Biotinylated Human CLEC9A, hFc Tag ELISA

0.05µg Anti-CLEC9A Antibody, hFc Tag Per Well



Immobilized Anti-CLEC9A Antibody, hFc Tag at 0.5µg/ml (100µl/well) on the plate. Dose response curve for Biotinylated Human CLEC9A, hFc Tag with the EC50 of 30.9ng/ml determined by ELISA (QC Test).