

# Biotinylated Human CLEC12A/MICL/CLL-1 Protein

Cat. No. CLE-HM42AB

## Description

<b>Source</b>	Recombinant Biotinylated Human CLEC12A/MICL/CLL-1 Protein is expressed from HEK293 with His tag at the N-Terminus and Avi tag at the C-Terminus. It contains His65-Ala265.
<b>Accession</b>	Q5QGZ9-2
<b>Molecular Weight</b>	The protein has a predicted MW of 26.4 kDa. Due to glycosylation, the protein migrates to 38-50 kDa based on Bis-Tris PAGE result.
<b>Endotoxin</b>	Less than 1EU per $\mu\text{g}$ by the LAL method.
<b>Purity</b>	> 95% as determined by Bis-Tris PAGE > 95% as determined by HPLC

## Formulation and Storage

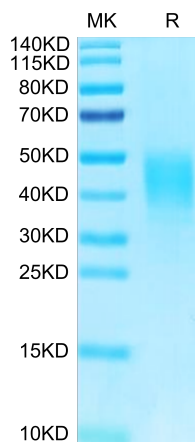
<b>Formulation</b>	Lyophilized from 0.22 $\mu\text{m}$ filtered solution in PBS (pH 7.4). Normally 8% trehalose is added as protectant before lyophilization.
<b>Reconstitution</b>	Centrifuge the tube before opening. Reconstituting to a concentration more than 100 $\mu\text{g}/\text{ml}$ is recommended. Dissolve the lyophilized protein in distilled water.
<b>Storage</b>	-20 to -80°C for 12 months as supplied from date of receipt. -80°C for 3 months after reconstitution. Recommend to aliquot the protein into smaller quantities for optimal storage. Please minimize freeze-thaw cycles.

## Background

CLEC12A has recently been identified as an antigen, expressed on leukemic stem cells and leukemic blasts. Given the fact that this expression profile seems stable throughout diagnosis, treatment and relapse on leukemic blasts and leukemic stem cells, CLEC12A can be considered a highly potent and reliable marker for the detection of measurable residual disease and therefore applicable for risk stratification and prognostication in AML.

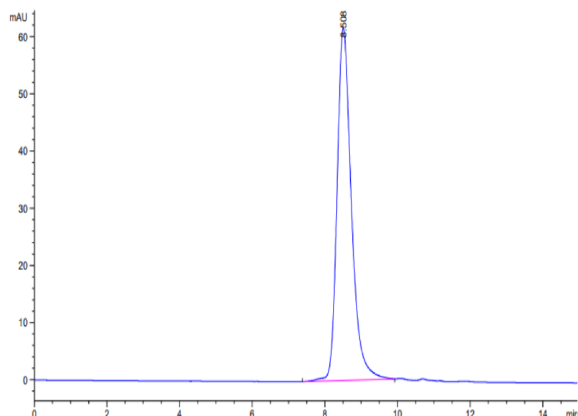
## Assay Data

### Bis-Tris PAGE



Biotinylated Human CLEC12A on Bis-Tris PAGE under reduced condition. The purity is greater than 95%.

### SEC-HPLC



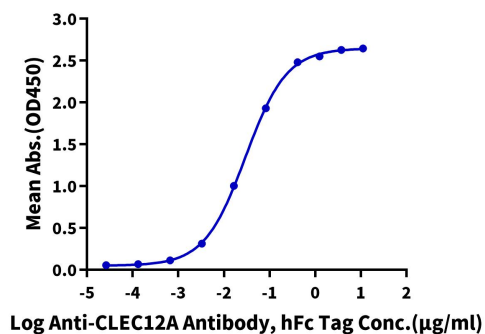
The purity of Biotinylated Human CLEC12A is greater than 95% as determined by SEC-HPLC.

Assay Data

ELISA Data

**Biotinylated Human CLEC12A, His Tag ELISA**

0.1µg Biotinylated Human CLEC12A, His Tag Per Well



Immobilized Biotinylated Human CLEC12A, His Tag at 1µg/ml (100µl/well) on the streptavidin precoated plate (5µg/ml). Dose response curve for Anti-CLEC12A Antibody, hFc Tag with the EC50 of 29.6ng/ml determined by ELISA.