

Biotinylated Human MDL-1/CLEC5A Protein

Cat. No. CLE-HM45AB



Description

Source	Recombinant Biotinylated Human MDL-1/CLEC5A Protein is expressed from HEK293 with His tag and Avi tag at the N-terminus.
	It contains Pro28-Lys188.
Accession	Q9NY25-1
Molecular Weight	The protein has a predicted MW of 21.3 kDa. Due to glycosylation, the protein migrates to 43-53 kDa based on Bis-Tris PAGE result.
Endotoxin	Less than 1 EU per µg by the LAL method.
Purity	> 95% as determined by Bis-Tris PAGE
	> 95% as determined by HPLC

Formulation and Storage

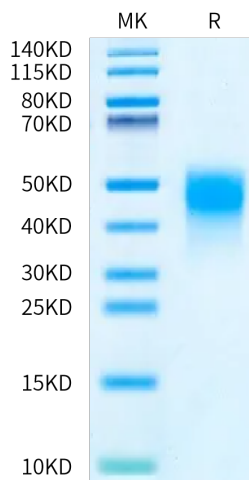
Formulation	Supplied as 0.22 µm filtered solution in PBS (pH 7.4).
Storage	Valid for 12 months from date of receipt when stored at -80°C. Recommend to aliquot the protein into smaller quantities for optimal storage. Please minimize freeze-thaw cycles.

Background

In *C. elegans*, increased lifespan in daf-2 insulin/IGF-1 receptor mutants is accompanied by up-regulation of the MDL-1 Mad basic helix-loop-helix leucine zipper transcription factor. MDL-1, like its mammalian orthologs, is an inhibitor of cell proliferation and growth that slows progression of an age-related pathology in *C. elegans* (uterine tumors). In addition, intestine-limited rescue of mdl-1 increased lifespan but not to wild type levels. Thus, mdl-1 likely acts both in the intestine and the germline to influence age-related mortality.

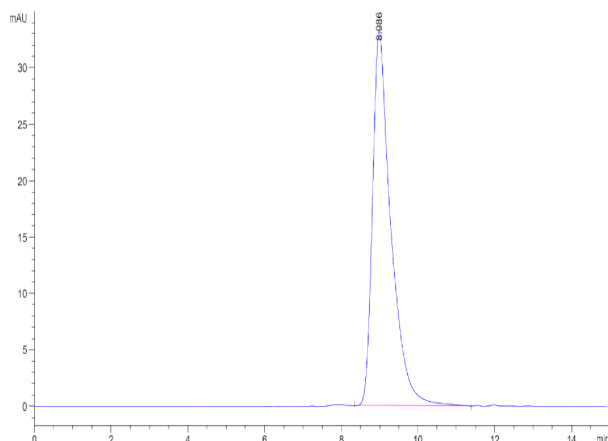
Assay Data

Bis-Tris PAGE



Biotinylated Human MDL-1 on Bis-Tris PAGE under reduced condition. The purity is greater than 95%.

SEC-HPLC



The purity of Biotinylated Human MDL-1 is greater than 95% as determined by SEC-HPLC.

Biotinylated Human MDL-1/CLEC5A Protein

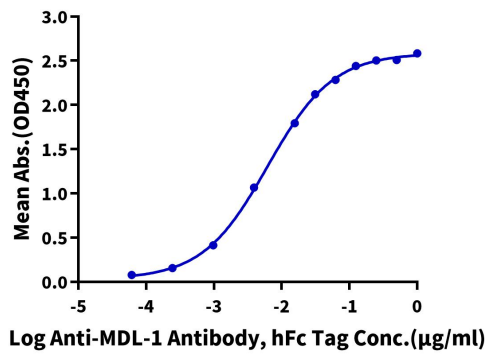
Cat. No. CLE-HM45AB



Assay Data

ELISA Data

Biotinylated Human MDL-1, His Avi Tag ELISA
0.05µg Biotinylated Human MDL-1, His Avi Tag Per Well



Immobilized Biotinylated Human MDL-1, His Avi Tag at 0.5µg/ml (100µl/well) on the streptavidin precoated plate (5µg/ml). Dose response curve for Anti-MDL-1 Antibody, hFc Tag with the EC50 of 6.2ng/ml determined by ELISA.