

Biotinylated Human CLEC12A/MICL/CLL-1 Protein

Cat. No. CLE-HM52AB

Description

Source	Recombinant Biotinylated Human CLEC12A/MICL/CLL-1 Protein is expressed from HEK293 with hFc tag and Avi tag at the N-Terminus. It contains His65-Ala265.
Accession	Q5QGZ9-2
Molecular Weight	The protein has a predicted MW of 51.7 kDa. Due to glycosylation, the protein migrates to 67-70 kDa based on Tris-Bis PAGE result.
Endotoxin	Less than 1EU per ug by the LAL method.
Purity	> 95% as determined by Tris-Bis PAGE > 95% as determined by HPLC

Formulation and Storage

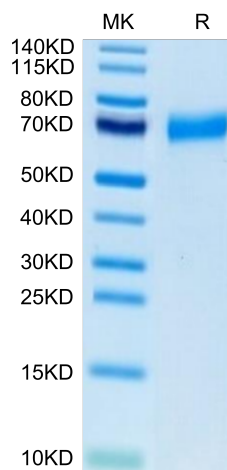
Formulation	Lyophilized from 0.22µm filtered solution in PBS (pH 7.4). Normally 8% trehalose is added as protectant before lyophilization.
Reconstitution	Centrifuge the tube before opening. Reconstituting to a concentration more than 100 µg/ml is recommended. Dissolve the lyophilized protein in distilled water.
Storage	-20 to -80°C for 12 months as supplied from date of receipt. -20 to -80°C for 3-6 months in unopened state after reconstitution. 2-8°C for 2-7 days after reconstitution. Recommend to aliquot the protein into smaller quantities for optimal storage. Please minimize freeze-thaw cycles.

Background

CLEC12A has recently been identified as an antigen, expressed on leukemic stem cells and leukemic blasts. Given the fact that this expression profile seems stable throughout diagnosis, treatment and relapse on leukemic blasts and leukemic stem cells, CLEC12A can be considered a highly potent and reliable marker for the detection of measurable residual disease and therefore applicable for risk stratification and prognostication in AML.

Assay Data

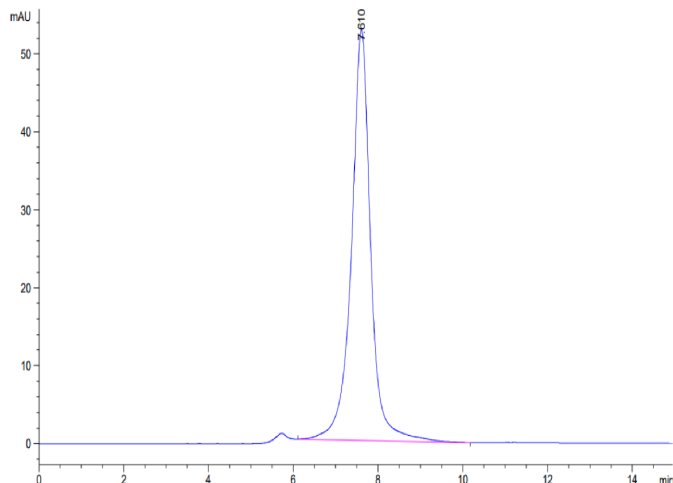
Tris-Bis PAGE



Biotinylated Human CLEC12A on Tris-Bis PAGE under reduced condition. The purity is greater than 95%.

SEC-HPLC

Assay Data

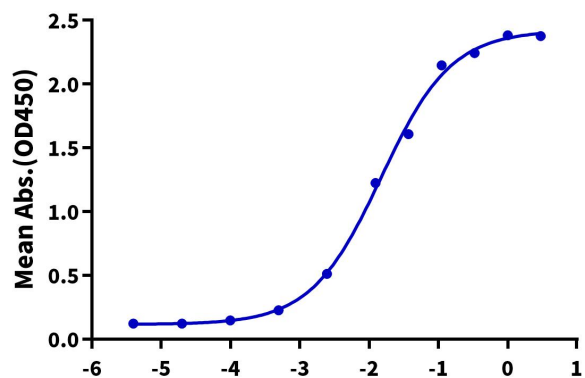


The purity of Biotinylated Human CLEC12A is greater than 95% as determined by SEC-HPLC.

ELISA Data

Biotinylated Human CLEC12A, hFc Tag ELISA

0.1µg Anti-CLEC12A Antibody, hFc Tag Per Well



Immobilized Anti-CLEC12A Antibody, hFc Tag at 1µg/ml (100µl/Well) on the plate. Dose response curve for Biotinylated Human CLEC12A, hFc Tag with the EC50 of 14.9ng/ml determined by ELISA.

Log Biotinylated Human CLEC12A, hFc Tag Conc.(µg/ml)