

Mouse CLEC14A Protein

Cat. No. CLE-MM14A

Description

| | |
|-------------------------|--|
| Source | Recombinant Mouse CLEC14A Protein is expressed from HEK293 with His tag at the C-Terminus. It contains Glu22-Thr386. |
| Accession | Q8VCP9 |
| Molecular Weight | The protein has a predicted MW of 40.33 kDa. Due to glycosylation, the protein migrates to 75-105 kDa based on Tris-Bis PAGE result. |
| Endotoxin | Less than 1EU per μg by the LAL method. |
| Purity | > 95% as determined by Tris-Bis PAGE > 95% as determined by HPLC |

Formulation and Storage

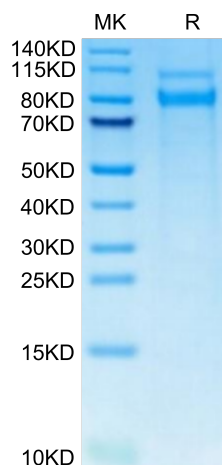
| | |
|-----------------------|---|
| Formulation | Lyophilized from 0.22 μm filtered solution in PBS (pH 7.4). Normally 8% trehalose is added as protectant before lyophilization. |
| Reconstitution | Centrifuge the tube before opening. Reconstituting to a concentration more than 100 $\mu\text{g}/\text{ml}$ is recommended. Dissolve the lyophilized protein in distilled water. |
| Storage | -20 to -80°C for 12 months as supplied from date of receipt. -20 to -80°C for 3-6 months in unopened state after reconstitution. 2-8°C for 2-7 days after reconstitution. Recommend to aliquot the protein into smaller quantities for optimal storage. Please minimize freeze-thaw cycles. |

Background

CLEC14A is a single-pass transmembrane glycoprotein belonging to the vascular expressed C-type lectin family. CLEC14A is found to be expressed in vascular endothelial cells during embryogenesis and is also implicated in tumor angiogenesis.

Assay Data

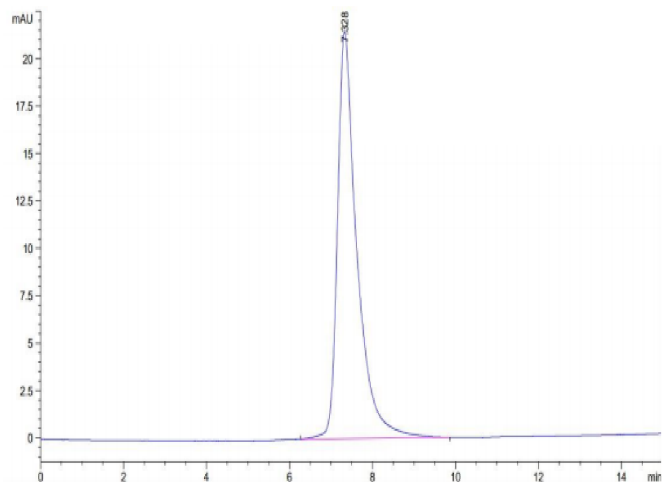
Tris-Bis PAGE



Mouse CLEC14A on Tris-Bis PAGE under reduced condition. The purity is greater than 95%.

SEC-HPLC

Assay Data



The purity of Mouse CLEC14A is greater than 95% as determined by SEC-HPLC.