

Mouse CLEC9A Protein

Cat. No. CLE-MM29A



Description

Source	Recombinant Mouse CLEC9A Protein is expressed from HEK293 with hFc tag at the N-Terminus.
	It contains Lys57-Ile264.
Accession	NP_001192292.1
Molecular Weight	The protein has a predicted MW of 50.9 kDa. Due to glycosylation, the protein migrates to 60-70 kDa based on Bis-Tris PAGE result.
Endotoxin	Less than 1EU per µg by the LAL method.
Purity	> 95% as determined by Bis-Tris PAGE
	> 95% as determined by HPLC

Formulation and Storage

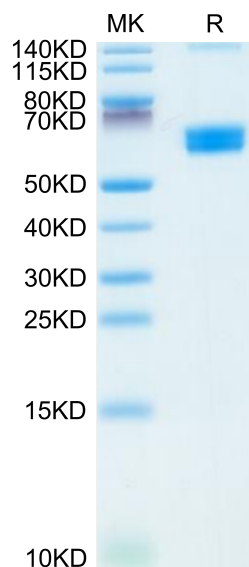
Formulation	Lyophilized from 0.22µm filtered solution in PBS (pH 7.4). Normally 8% trehalose is added as protectant before lyophilization.
Reconstitution	Centrifuge the tube before opening. Reconstituting to a concentration more than 100 µg/ml is recommended. Dissolve the lyophilized protein in distilled water.
Storage	-20 to -80°C for 12 months as supplied from date of receipt. -80°C for 3-6 months after reconstitution. 2-8°C for 2-7 days after reconstitution. Recommend to aliquot the protein into smaller quantities for optimal storage. Please minimize freeze-thaw cycles.

Background

CLEC9A expression was significantly higher in psoriatic skin compared with healthy donor. In psoriatic skin and PsA ST, CLEC9A(+) cells were in close proximity to TUNEL(+) cells. SF CLEC9A levels were significantly lower compared with paired PsA serum. Adalimumab treatment did not affect CLEC9A serum level and skin expression. The downregulation of synovial CLEC9A might be associated with a novel mechanism by which anti-TNF therapy might reduce CD8-mediated inflammation in PsA patients.

Assay Data

Bis-Tris PAGE



Mouse CLEC9A on Bis-Tris PAGE under reduced condition. The purity is greater than 95%.

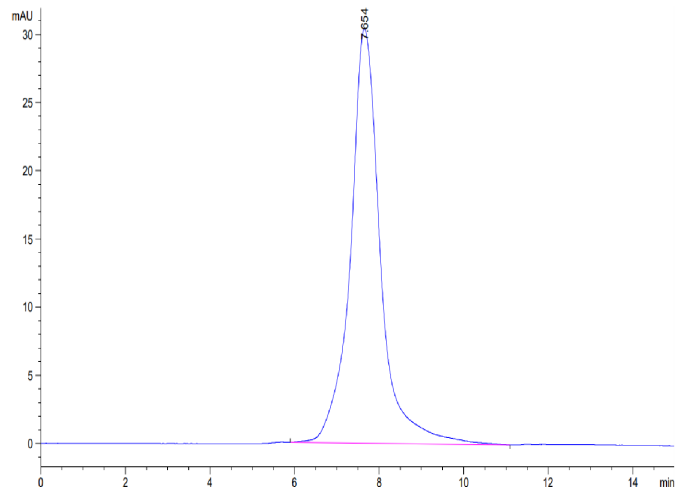
SEC-HPLC

Mouse CLEC9A Protein

Cat. No. CLE-MM29A



Assay Data



The purity of Mouse CLEC9A is greater than 95% as determined by SEC-HPLC.