

Rat CLEC11a/SCGF-alpha Protein

Cat. No. CLE-RM111

Description	
Source	Recombinant Rat CLEC11a/SCGF-alpha Protein is expressed from HEK293 with His tag at the C-terminus. It contains Ala22-Phe328.
Accession	O88201
Molecular Weight	The protein has a predicted MW of 35.78 kDa. Due to glycosylation, the protein migrates to 45-60 kDa based on Bis-Tris PAGE result.
Endotoxin	Less than 1EU per µg by the LAL method.
Purity	> 90% as determined by Bis-Tris PAGE

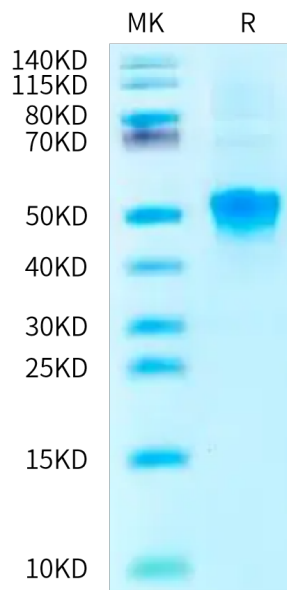
Formulation and Storage	
Formulation	Supplied as 0.22 µm filtered solution in PBS (pH 7.4).
Storage	Valid for 12 months from date of receipt when stored at -80°C. Recommend to aliquot the protein into smaller quantities for optimal storage. Please minimize freeze-thaw cycles.

Background

C-type lectin domain family 11 member A (Clec11a), also known as stem cell growth factor (SCGF), C-type lectin superfamily member 3 (CLECSF3), or osteolectin was initially identified as a growth factor for hematopoietic progenitor cells. The Clec11a gene encodes a polypeptide of 323 amino acids with characteristics of a secreted glycoprotein encompassing two integrin-binding motifs, RGD (Arg-Gly-Asp) and LDT (Leu-Asp-Thr), a putative leucine zipper domain, and a functional C-type lectin domain.

Assay Data

Bis-Tris PAGE



Rat CLEC11a on Bis-Tris PAGE under reduced condition. The purity is greater than 90%.