

Human CKMT1A Protein

Cat. No. CMT-HB11A

Description

Source	Recombinant Human CKMT1A Protein is expressed from Baculovirus-Insect Cells with His tag at the N-terminus. It contains Ala40-His417.
Accession	P12532-1
Molecular Weight	The protein has a predicted MW of 44.60 kDa same as Bis-Tris PAGE result.
Endotoxin	Less than 1EU per µg by the LAL method.
Purity	> 95% as determined by Bis-Tris PAGE

Formulation and Storage

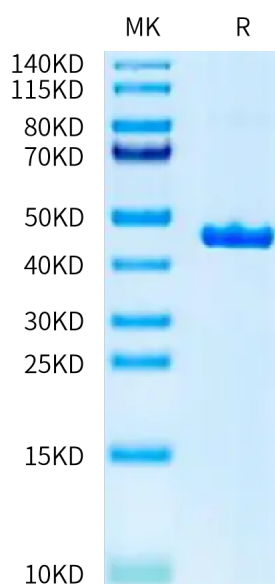
Formulation	Supplied as 0.22 µm filtered solution in 20mM Tris, 500mM NaCl (pH 8.5).
Storage	Valid for 12 months from date of receipt when stored at -80°C. Recommend to aliquot the protein into smaller quantities for optimal storage. Please minimize freeze-thaw cycles.

Background

Mitochondrial creatine kinase 1A (CKMT1A) is a mitochondrial protein that exists on the outer surface of the inner membrane of mitochondria. Its main function is to facilitate the transfer of phosphocreatine (PCr) energy across mitochondria by transferring phosphate groups from mitochondrial ATP to creatine (Cr).

Assay Data

Bis-Tris PAGE



Human CKMT1A on Bis-Tris PAGE under reduced condition. The purity is greater than 95%.