

SARS-CoV-2 3CLpro/3C-like Protease Protein (S144A)

Cat. No. COV-VE0LC



Description

Source	Recombinant SARS-CoV-2 3CLpro/3C-like Protease Protein (S144A) is expressed from E.coli without tag. It contains Ser1-Gln306(S144A).
Accession	YP_009725301.1
Molecular Weight	The protein has a predicted MW of 33.78 kDa same as Bis-Tris PAGE result.
Endotoxin	Less than 1EU per µg by the LAL method.
Purity	> 95% as determined by Bis-Tris PAGE > 95% as determined by HPLC

Formulation and Storage

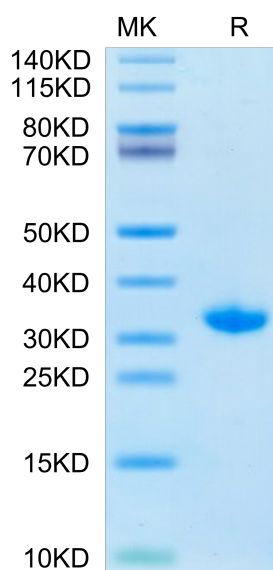
Formulation	Supplied as 0.22µm filtered solution in 25mM HEPES, 2.5mM DTT, 10% Glycerol (pH 7.5).
Storage	Valid for 12 months from date of receipt when stored at -80°C. Recommend to aliquot the protein into smaller quantities for optimal storage. Please minimize freeze-thaw cycles.

Background

3CL protease, a viral cysteine proteinase, plays an important role in co-translational proteolytic processing of Coronavirus polyproteins. The 3CL protease cleaves as much as 11 sites in the replicase polyproteins and also releases the key replicative functions of polymerase and helicase.

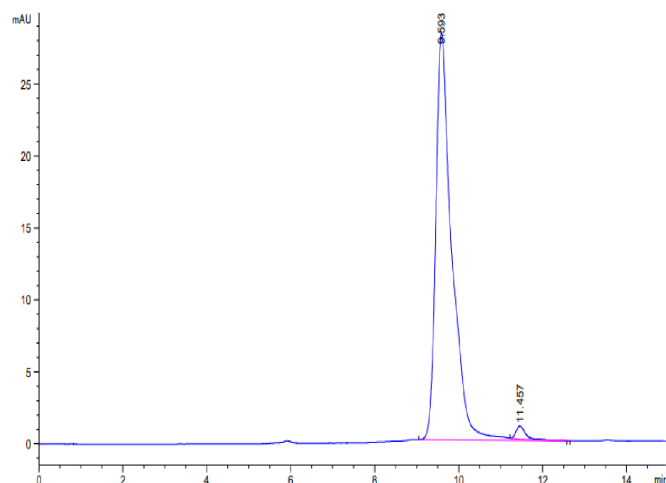
Assay Data

Bis-Tris PAGE



SARS-CoV-2 3CLpro (S144A) on Bis-Tris PAGE under reduced condition. The purity is greater than 95%.

SEC-HPLC



The purity of SARS-CoV-2 3CLpro (S144A) is greater than 95% as determined by SEC-HPLC.