

# Cynomolgus CRTAM Protein

Cat. No. CRM-CM101

Description	
Source	Recombinant Cynomolgus CRTAM Protein is expressed from HEK293 with His tag at the C-Terminus. It contains Ser18-Gly287.
Accession	XP_005580021.1
Molecular Weight	The protein has a predicted MW of 30.80 kDa. Due to glycosylation, the protein migrates to 50-70 kDa based on Bis-Tris PAGE result.
Endotoxin	Less than 0.1EU per µg by the LAL method.
Purity	> 95% as determined by Bis-Tris PAGE

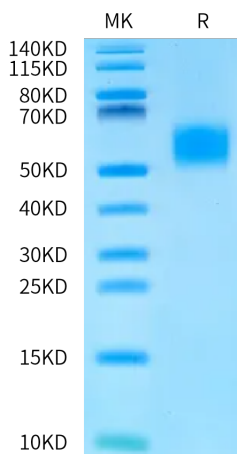
Formulation and Storage	
Formulation	Lyophilized from 0.22µm filtered solution in PBS (pH 7.4). Normally 8% trehalose is added as protectant before lyophilization.
Reconstitution	Centrifuge the tube before opening. Reconstituting to a concentration more than 100 µg/ml is recommended. Dissolve the lyophilized protein in distilled water.
Storage	-20 to -80°C for 12 months as supplied from date of receipt. -80°C for 3 months after reconstitution. Recommend to aliquot the protein into smaller quantities for optimal storage. Please minimize freeze-thaw cycles.

**Background**

Class-I Restricted T Cell-Associated Molecule (CRTAM) is a protein that is expressed after T cell activation. The interaction of CRTAM with its ligand, nectin-like 2 (Nectin2), is required for the efficient production of IL-17, IL-22, and IFN $\gamma$  by murine CD4 T cells, and it plays a role in optimal CD8 T and NK cell cytotoxicity. CRTAM promotes the pro-inflammatory cytokine profile; therefore, it may take part in the immunopathology of autoimmune diseases such as diabetes type 1 or colitis.

## Assay Data

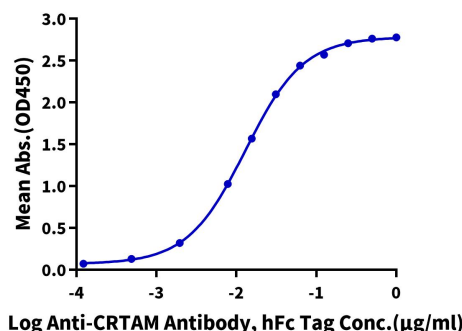
### Bis-Tris PAGE



Cynomolgus CRTAM on Bis-Tris PAGE under reduced condition. The purity is greater than 95%.

### ELISA Data

**Cynomolgus CRTAM, His Tag ELISA**  
0.2µg Cynomolgus CRTAM, His Tag Per Well



Immobilized Cynomolgus CRTAM, His Tag at 2µg/ml (100µl/Well) on the plate. Dose response curve for Anti-CRTAM Antibody, hFc Tag with the EC50 of 13.0ng/ml determined by ELISA (QC Test)