

Canine CRTAM Protein

Cat. No. CRM-DM101

Description

Source	Recombinant Canine CRTAM Protein is expressed from Expi293 with His tag at the C-terminal. It contains Phe18-Gly287.
Accession	E2QWY2
Molecular Weight	The protein has a predicted MW of 31.19 kDa. Due to glycosylation, the protein migrates to 55-70 kDa based on Tris-Bis PAGE result.
Endotoxin	Less than 1EU per μ g by the LAL method.
Purity	> 95% as determined by Tris-Bis PAGE

Formulation and Storage

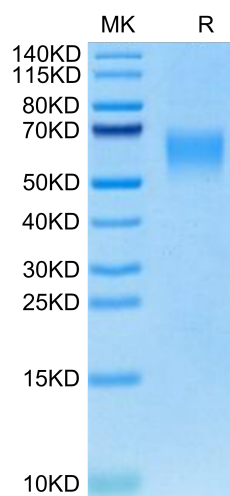
Formulation	Supplied as 0.22 μ m filtered solution in PBS (pH 7.4). Please dilute to the desired concentration according to the concentration of the solution shown on the product label.
Storage	Valid for 12 months from date of receipt when stored at -80°C. Recommend to aliquot the protein into smaller quantities for optimal storage. Please do not repeated freeze-thaw cycles.

Background

Class-I Restricted T Cell-Associated Molecule (CRTAM) is a protein that is expressed after T cell activation. The interaction of CRTAM with its ligand, nectin-like 2 (Nect2), is required for the efficient production of IL-17, IL-22, and IFN γ by murine CD4 T cells, and it plays a role in optimal CD8 T and NK cell cytotoxicity. CRTAM promotes the pro-inflammatory cytokine profile; therefore, it may take part in the immunopathology of autoimmune diseases such as diabetes type 1 or colitis.

Assay Data

Tris-Bis PAGE



Canine CRTAM on Tris-Bis PAGE under reduced condition. The purity is greater than 95%.