

Human C-Reactive Protein /CRP Protein

Cat. No. CRP-HM101

Description

Source	Recombinant Human C-Reactive Protein /CRP Protein is expressed from HEK293 with His tag at the C-terminus. It contains Gln19-Pro224.
Accession	NP_000558.2
Molecular Weight	The protein has a predicted MW of 24.14 kDa. Due to glycosylation, the protein migrates to 25-27 kDa based on Bis-Tris PAGE result.
Endotoxin	Less than 1EU per μg by the LAL method.
Purity	> 95% as determined by Bis-Tris PAGE > 95% as determined by HPLC

Formulation and Storage

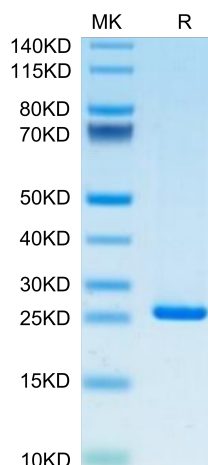
Formulation	Supplied as 0.22 μm filtered solution in 20 mM Tris, 200mM NaCl, 5mM CaCl ₂ (pH 8.0).
Storage	Valid for 12 months from date of receipt when stored at -80°C. Recommend to aliquot the protein into smaller quantities for optimal storage. Please minimize freeze-thaw cycles.

Background

C-reactive protein (CRP) is a polypeptide molecule belonging to the family of pentraxins. CRP is synthesized primarily by the liver in response to certain pro-inflammatory cytokines. It plays an important role in innate immunity, opsonization by its properties, complement activation and immunoglobulins receptor binding. CRP is a protein of the acute systemic inflammation and is, therefore, a prime marker of inflammation. The CRP is quantified by immunonephelometry or immunoturbidimetry.

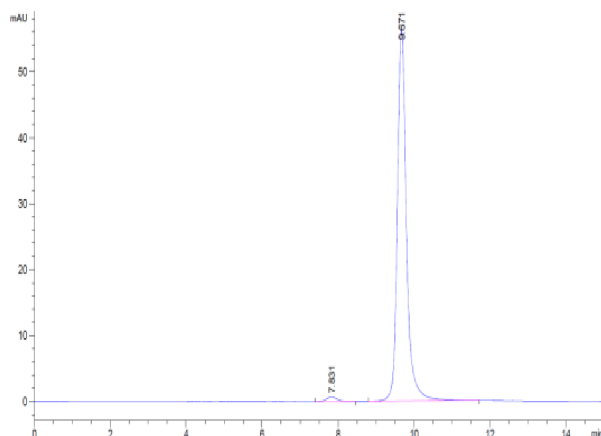
Assay Data

Bis-Tris PAGE



Human CRP on Bis-Tris PAGE under reduced condition. The purity is greater than 95%.

SEC-HPLC



The purity of Human CRP is greater than 95% as determined by SEC-HPLC.