

Mouse C-Reactive Protein/CRP Protein, Ultra Low Endotoxin



Cat. No. CRP-MM101-UL

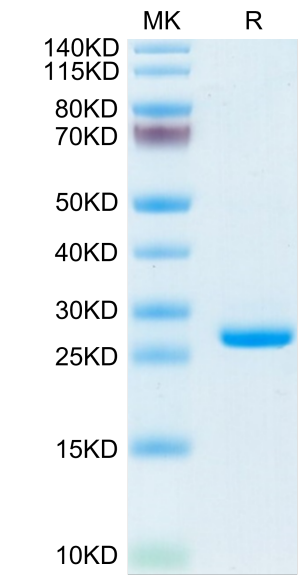
| Description | |
|------------------|--|
| Source | Recombinant Mouse C-Reactive Protein/CRP Protein is expressed from HEK293 with His tag at the C-Terminus. It contains His20-Ser225. |
| Accession | P14847 |
| Molecular Weight | The protein has a predicted MW of 24.2 kDa. Due to glycosylation, the protein migrates to 26-28 kDa based on Bis-Tris PAGE result. |
| Endotoxin | Less than 0.001 EU per µg by the LAL method. |
| Purity | > 95% as determined by Bis-Tris PAGE > 90% as determined by HPLC |

| Formulation and Storage | |
|-------------------------|---|
| Formulation | Lyophilized from 0.22µm filtered solution in PBS (pH 7.4). Normally 8% trehalose is added as protectant before lyophilization. |
| Reconstitution | Dissolve the lyophilized protein in distilled water. Please refer to the Certificate of Analysis for detailed instructions. |
| Storage | -20 to -80°C for 12 months as supplied from date of receipt. -80°C for 3 months after reconstitution. Recommend to aliquot the protein into smaller quantities for optimal storage. Please minimize freeze-thaw cycles. |

| Background | |
|---|--|
| C-reactive protein (CRP) is a polypeptide molecule belonging to the family of pentraxins. CRP is synthesized primarily by the liver in response to certain pro-inflammatory cytokines. It plays an important role in innate immunity, opsonization by its properties, complement activation and immunoglobulins receptor binding. CRP is a protein of the acute systemic inflammation and is, therefore, a prime marker of inflammation. The CRP is quantified by immunonephelometry or immunoturbidimetry. | |

Assay Data

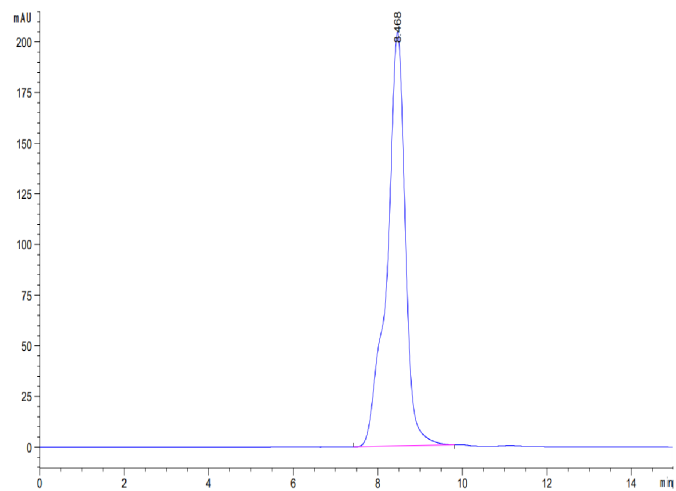
Bis-Tris PAGE



Mouse CRP on Bis-Tris PAGE under reduced condition. The purity is greater than 95%.

SEC-HPLC

Assay Data



The purity of Mouse CRP is greater than 90% as determined by SEC-HPLC.