

# Mouse C-Reactive Protein/CRP Protein

Cat. No. CRP-MM101

## Description

<b>Source</b>	Recombinant Mouse C-Reactive Protein/CRP Protein is expressed from HEK293 with His tag at the C-Terminus. It contains His20-Ser225.
<b>Accession</b>	P14847
<b>Molecular Weight</b>	The protein has a predicted MW of 24.2 kDa. Due to glycosylation, the protein migrates to 26-28 kDa based on Tris-Bis PAGE result.
<b>Endotoxin</b>	Less than 1EU per $\mu\text{g}$ by the LAL method.
<b>Purity</b>	> 95% as determined by Tris-Bis PAGE > 90% as determined by HPLC

## Formulation and Storage

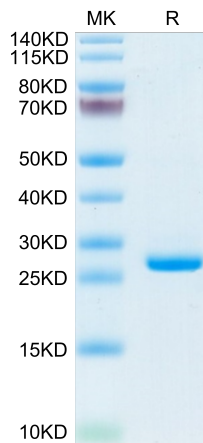
<b>Formulation</b>	Lyophilized from 0.22 $\mu\text{m}$ filtered solution in PBS (pH 7.4). Normally 8% trehalose is added as protectant before lyophilization.
<b>Reconstitution</b>	Centrifuge the tube before opening. Reconstituting to a concentration more than 100 $\mu\text{g}/\text{ml}$ is recommended. Dissolve the lyophilized protein in distilled water.
<b>Storage</b>	-20 to -80°C for 12 months as supplied from date of receipt. -20 to -80°C for 3-6 months in unopened state after reconstitution. 2-8°C for 2-7 days after reconstitution. Recommend to aliquot the protein into smaller quantities for optimal storage. Please minimize freeze-thaw cycles.

## Background

C-reactive protein (CRP) is a polypeptide molecule belonging to the family of pentraxins. CRP is synthesized primarily by the liver in response to certain pro-inflammatory cytokines. It plays an important role in innate immunity, opsonization by its properties, complement activation and immunoglobulins receptor binding. CRP is a protein of the acute systemic inflammation and is, therefore, a prime marker of inflammation. The CRP is quantified by immunonephelometry or immunoturbidimetry.

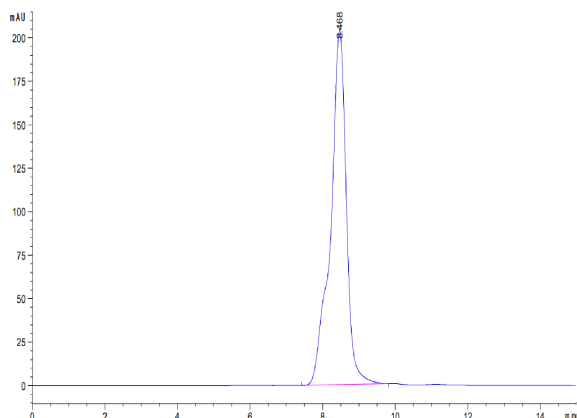
## Assay Data

### Tris-Bis PAGE



Mouse CRP on Tris-Bis PAGE under reduced condition. The purity is greater than 95%.

### SEC-HPLC



The purity of Mouse CRP is greater than 90% as determined by SEC-HPLC.