

# Cynomolgus M-CSF/CSF-1 Protein, Ultra Low Endotoxin

Cat. No. CSF-CM101-UL

## Description

<b>Source</b>	Recombinant Cynomolgus M-CSF/CSF-1 Protein is expressed from HEK293 with His tag at the C-Terminus. It contains Glu33-Leu255.
<b>Accession</b>	XP_045221641.1
<b>Molecular Weight</b>	The protein has a predicted MW of 26.26 kDa. Due to glycosylation, the protein migrates to 45-55 kDa based on Bis-Tris PAGE result.
<b>Endotoxin</b>	Less than 0.01 EU per µg by the LAL method.
<b>Purity</b>	> 95% as determined by Bis-Tris PAGE

## Formulation and Storage

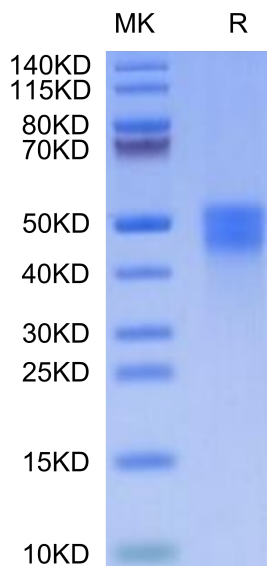
<b>Formulation</b>	Lyophilized from 0.22µm filtered solution in PBS (pH 7.4). Normally 8% trehalose is added as protectant before lyophilization.
<b>Reconstitution</b>	Dissolve the lyophilized protein in distilled water. Please refer to the Certificate of Analysis for detailed instructions.
<b>Storage</b>	-20 to -80°C for 12 months as supplied from date of receipt. -80°C for 3 months after reconstitution. Recommend to aliquot the protein into smaller quantities for optimal storage. Please minimize freeze-thaw cycles.

## Background

CSF-1, also known as M-CSF, is a four alpha-helical-bundle cytokine that is the primary regulator of macrophage survival, proliferation and differentiation. CSF-1 is also essential for the survival and proliferation of osteoclast progenitors. CSF-1 is cytokine that plays an essential role in the regulation of survival, proliferation and differentiation of hematopoietic precursor cells, especially mononuclear phagocytes, such as macrophages and monocytes. Promotes the release of proinflammatory chemokines, and thereby plays an important role in innate immunity and in inflammatory processes. This mutation leads to a deletion of exons 2-7 of the EGFR gene and renders the mutant receptor incapable of binding any known ligand.

## Assay Data

### Bis-Tris PAGE



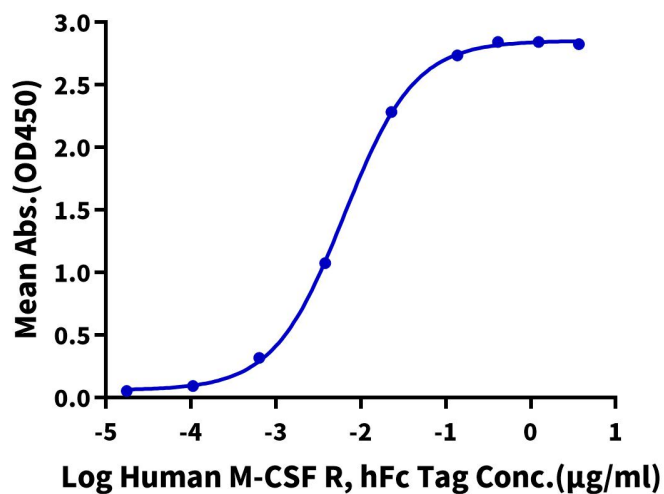
Cynomolgus M-CSF on Bis-Tris PAGE under reduced condition. The purity is greater than 95%.

### ELISA Data

Assay Data

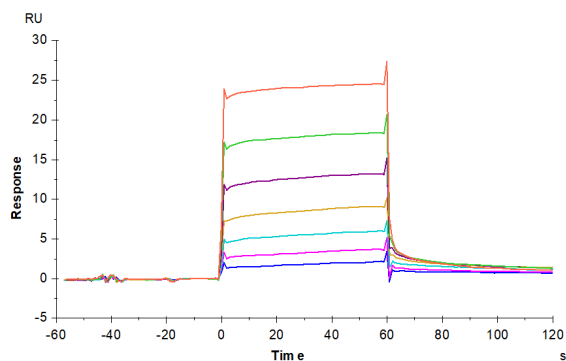
**Cynomolgus M-CSF, His Tag ELISA**

0.1µg Cynomolgus M-CSF, His Tag Per Well



Immobilized Cynomolgus M-CSF, His Tag at 1µg/ml (100µl/well) on the plate. Dose response curve for Human M-CSF R, hFc Tag with the EC50 of 6.5ng/ml determined by ELISA (QC Test).

SPR Data



Cynomolgus M-CSF R, His Tag immobilized on CM5 Chip can bind Cynomolgus M-CSF, His Tag with an affinity constant of 0.889 µM as determined in SPR assay (Biacore T200).