

Human M-CSF/CSF-1 Protein



Cat. No. CSF-HM001

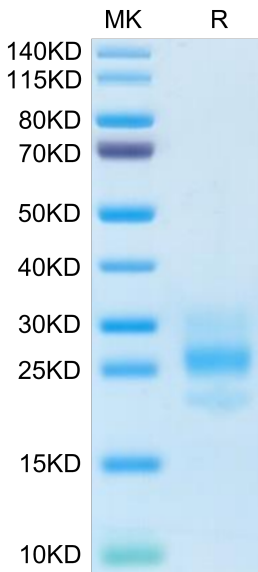
Description	
Source	Recombinant Human M-CSF/CSF-1 Protein is expressed from HEK293 without tag. It contains Glu33-Asn190.
Accession	P09603-1
Molecular Weight	The protein has a predicted MW of 18.40 kDa. Due to glycosylation, the protein migrates to 23-28 kDa based on Bis-Tris PAGE result.
Endotoxin	Less than 0.05 EU per µg by the LAL method.
Purity	> 95% as determined by Bis-Tris PAGE > 95% as determined by HPLC

Formulation and Storage	
Formulation	Supplied as 0.22µm filtered solution in PBS (pH 7.4).
Storage	Valid for 12 months from date of receipt when stored at -80°C. Recommend to aliquot the protein into smaller quantities for optimal storage. Please minimize freeze-thaw cycles.

Background	
CSF-1, also known as M-CSF , is a four alpha -helical-bundle cytokine that is the primary regulator of macrophage survival, proliferation and differentiation. CSF-1 is also essential for the survival and proliferation of osteoclast progenitors.CSF-1 is cytokine that plays an essential role in the regulation of survival, proliferation and differentiation of hematopoietic precursor cells, especially mononuclear phagocytes, such as macrophages and monocytes. Promotes the release of proinflammatory chemokines, and thereby plays an important role in innate immunity and in inflammatory processes. This mutation leads to a deletion of exons 2-7 of the EGFR gene and renders the mutant receptor incapable of binding any known ligand.	

Assay Data

Bis-Tris PAGE



Human M-CSF on Bis-Tris PAGE under reduced condition. The purity is greater than 95%.

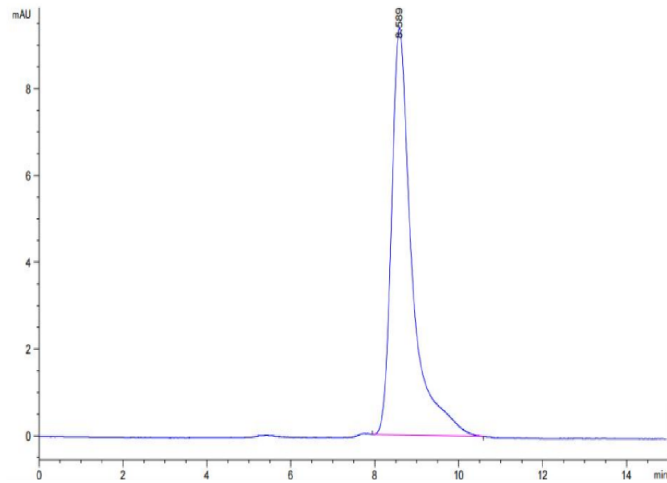
SEC-HPLC

Human M-CSF/CSF-1 Protein

Cat. No. CSF-HM001



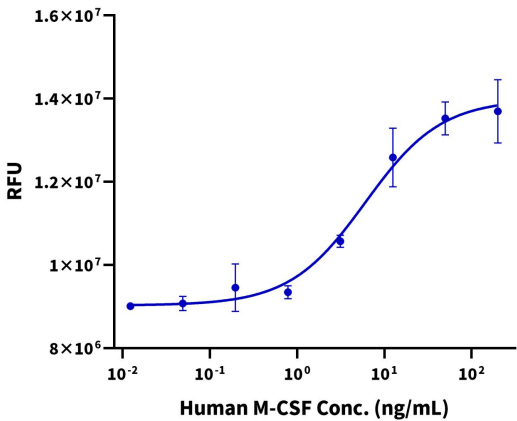
Assay Data



The purity of Human M-CSF is greater than 95% as determined by SEC-HPLC.

Cell Based Assay

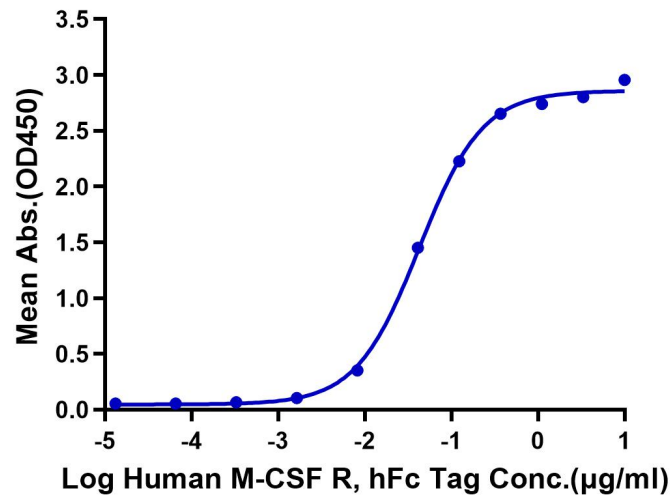
Recombinant Human M-CSF Bioactivity



Measured in a cell proliferation assay using RAW264.7 cells. The ED<sub>50</sub> for this effect is 1-10 ng/mL (QC Test).

ELISA Data

Human M-CSF, No Tag ELISA  
0.05µg Human M-CSF, No Tag Per Well



Immobilized Human M-CSF at 0.5µg/ml (100µl/Well) on the plate. Dose response curve for Human M-CSF R, hFc Tag with the EC<sub>50</sub> 42.8ng/ml determined by ELISA (QC Test).

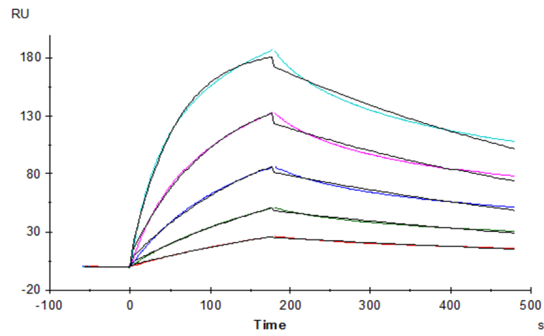
SPR Data

## Human M-CSF/CSF-1 Protein

Cat. No. CSF-HM001



### Assay Data



Human M-CSF, No Tag immobilized on CM5  
Chip can bind Human M-CSF R, hFc Tag with an  
affinity constant of 2.06 nM as determined in SPR  
assay (Biacore T200).