

Mouse GM-CSF R alpha Protein, Ultra Low Endotoxin



Cat. No. CSF-MM12R-UL

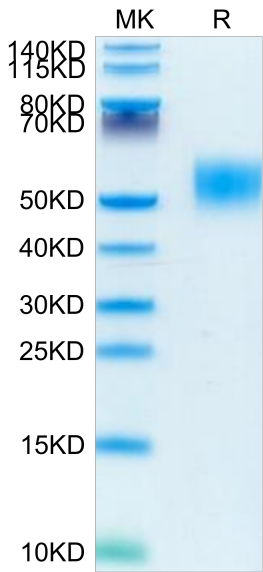
Description	
Source	Recombinant Mouse GM-CSF R alpha Protein is expressed from HEK293 with His tag at the C-Terminus. It contains Leu30-Pro327.
Accession	Q00941
Molecular Weight	The protein has a predicted MW of 33.1 kDa. Due to glycosylation, the protein migrates to 50-65 kDa based on Bis-Tris PAGE result.
Endotoxin	Less than 0.01 EU per µg by the LAL method.
Purity	> 95% as determined by Bis-Tris PAGE > 95% as determined by HPLC

Formulation and Storage	
Formulation	Lyophilized from 0.22µm filtered solution in PBS (pH 7.4). Normally 8% trehalose is added as protectant before lyophilization.
Reconstitution	Dissolve the lyophilized protein in distilled water. Please refer to the Certificate of Analysis for detailed instructions.
Storage	-20 to -80°C for 12 months as supplied from date of receipt.-80°C for 3 months after reconstitution.Recommend to aliquot the protein into smaller quantities for optimal storage. Please minimize freeze-thaw cycles.

Background	
In the first trimester, the GM-CSF-R was found to be present on villous cytotrophoblast and all populations of extravillous trophoblast. Expression by villous syncytiotrophoblast was weak or absent, but this increased markedly by term. GM-CSF-R were also expressed by fetal Hofbauer cells within the mesenchyme of the chorionic villi and by uterine glandular epithelium and decidual macrophages within maternal decidua.	

Assay Data

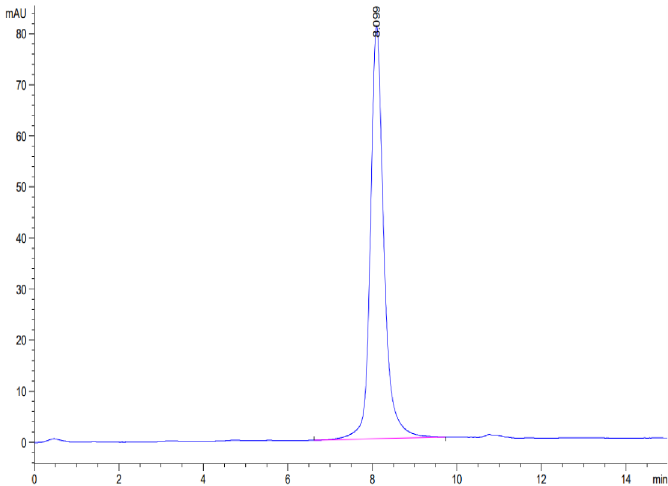
Bis-Tris PAGE



Mouse GM-CSF R alpha on Bis-Tris PAGE under reduced condition. The purity is greater than 95%.

SEC-HPLC

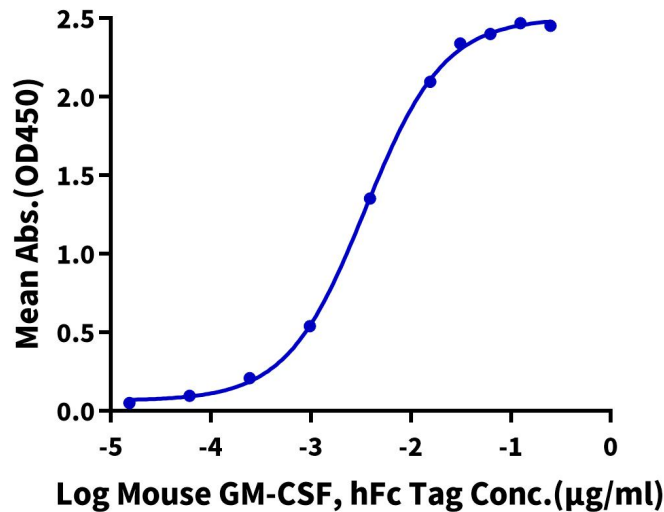
Assay Data



The purity of Mouse GM-CSF R alpha is greater than 95% as determined by SEC-HPLC.

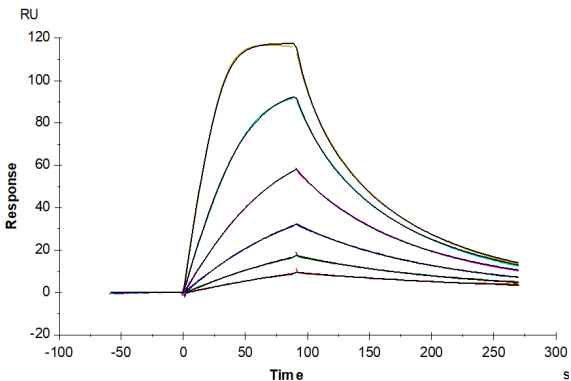
ELISA Data

Mouse GM-CSF R alpha, His Tag ELISA
0.1µg Mouse GM-CSF R alpha, His Tag Per Well



Immobilized Mouse GM-CSF R alpha, His Tag at 1µg/ml (100µl/well) on the plate. Dose response curve for Mouse GM-CSF, hFc Tag with the EC50 of 3.5ng/ml determined by ELISA (QC Test).

SPR Data



Mouse GM-CSF R alpha, His Tag captured on CM5 Chip via Anti-his antibody can bind Mouse GM-CSF, No Tag with an affinity constant of 6.32 nM as determined in SPR assay (Biacore T200).