

# Mouse GM-CSF R alpha Protein

Cat. No. CSF-MM12R

## Description

<b>Source</b>	Recombinant Mouse GM-CSF R alpha Protein is expressed from HEK293 with His tag at the C-Terminus. It contains Leu30-Pro327.
<b>Accession</b>	Q00941
<b>Molecular Weight</b>	The protein has a predicted MW of 33.1 kDa. Due to glycosylation, the protein migrates to 50-65 kDa based on Bis-Tris PAGE result.
<b>Endotoxin</b>	Less than 1EU per $\mu\text{g}$ by the LAL method.
<b>Purity</b>	> 95% as determined by Bis-Tris PAGE > 95% as determined by HPLC

## Formulation and Storage

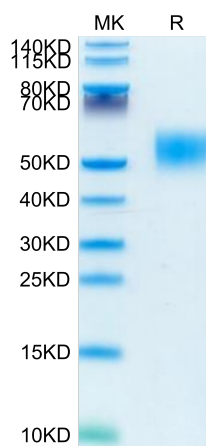
<b>Formulation</b>	Lyophilized from 0.22 $\mu\text{m}$ filtered solution in PBS (pH 7.4). Normally 8% trehalose is added as protectant before lyophilization.
<b>Reconstitution</b>	Centrifuge the tube before opening. Reconstituting to a concentration more than 100 $\mu\text{g}/\text{ml}$ is recommended. Dissolve the lyophilized protein in distilled water.
<b>Storage</b>	-20 to -80°C for 12 months as supplied from date of receipt. -80°C for 3 months after reconstitution. Recommend to aliquot the protein into smaller quantities for optimal storage. Please minimize freeze-thaw cycles.

## Background

In the first trimester, the GM-CSF-R was found to be present on villous cytotrophoblast and all populations of extravillous trophoblast. Expression by villous syncytiotrophoblast was weak or absent, but this increased markedly by term. GM-CSF-R were also expressed by fetal Hofbauer cells within the mesenchyme of the chorionic villi and by uterine glandular epithelium and decidual macrophages within maternal decidua.

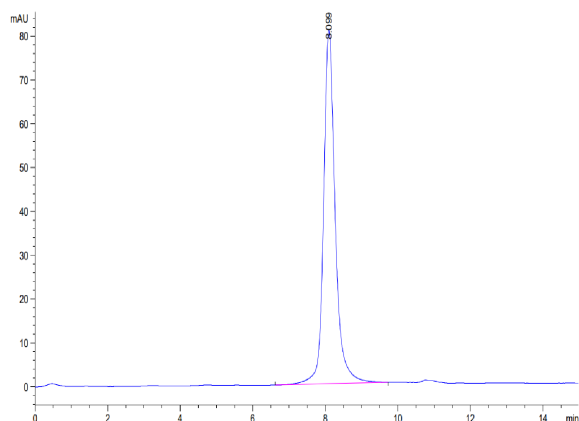
## Assay Data

### Bis-Tris PAGE



Mouse GM-CSF R alpha on Bis-Tris PAGE under reduced condition. The purity is greater than 95%.

### SEC-HPLC



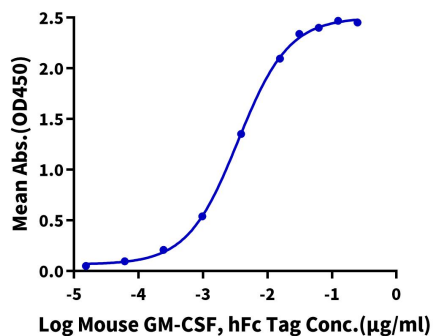
The purity of Mouse GM-CSF R alpha is greater than 95% as determined by SEC-HPLC.

Assay Data

ELISA Data

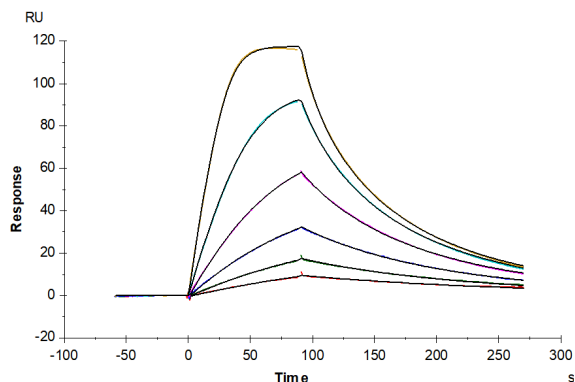
**Mouse GM-CSF R alpha, His Tag ELISA**

0.1µg Mouse GM-CSF R alpha, His Tag Per Well



Immobilized Mouse GM-CSF R alpha, His Tag at 1µg/ml (100µl/well) on the plate. Dose response curve for Mouse GM-CSF, hFc Tag with the EC50 of 3.5ng/ml determined by ELISA (QC Test).

SPR Data



Mouse GM-CSF R alpha, His Tag captured on CM5 Chip via Anti-his antibody can bind Mouse GM-CSF, No Tag with an affinity constant of 6.32 nM as determined in SPR assay (Biacore T200).