

Cynomolgus CTLA-4/CD152 Protein

Cat. No. CTL-CM141



Description

Source	Recombinant Cynomolgus CTLA-4/CD152 Protein is expressed from HEK293 with His tag at the C-Terminus. It contains Ala37-Ser160.
Accession	G7PL88-1
Molecular Weight	The protein has a predicted MW of 14.4 kDa. Due to glycosylation, the protein migrates to 25-30 kDa based on Bis-Tris PAGE result.
Endotoxin	Less than 1 EU per µg by the LAL method.
Purity	> 95% as determined by Bis-Tris PAGE > 95% as determined by HPLC

Formulation and Storage

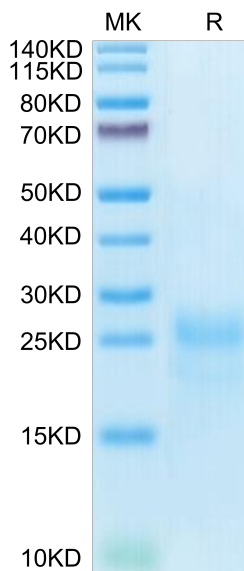
Formulation	Lyophilized from 0.22µm filtered solution in PBS (pH 7.4). Normally 8% trehalose is added as protectant before lyophilization.
Reconstitution	Dissolve the lyophilized protein in distilled water. Please refer to the Certificate of Analysis for detailed instructions.
Storage	-20 to -80°C for 12 months as supplied from date of receipt. -80°C for 3 months after reconstitution. Recommend to aliquot the protein into smaller quantities for optimal storage. Please minimize freeze-thaw cycles.

Background

CTLA-4 (cytotoxic T-lymphocyte-associated protein 4), also known as CD152, is a protein receptor that, functioning as an immune checkpoint, downregulates immune responses. CTLA4 is constitutively expressed in regulatory T cells but only upregulated in conventional T cells after activation – a phenomenon which is particularly notable in cancers. It acts as an "off" switch when bound to CD80 or CD86 on the surface of antigen-presenting cells.

Assay Data

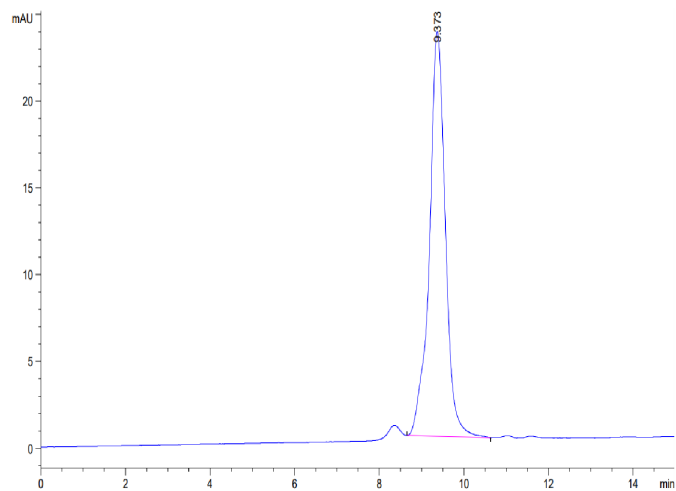
Bis-Tris PAGE



Cynomolgus CTLA-4 on Bis-Tris PAGE under reduced condition. The purity is greater than 95%.

SEC-HPLC

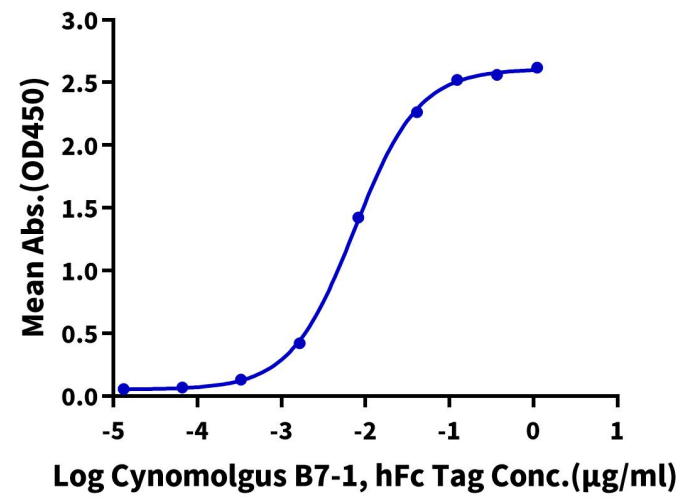
Assay Data



The purity of Cynomolgus CTLA-4 is greater than 95% as determined by SEC-HPLC.

ELISA Data

Cynomolgus CTLA-4, His Tag ELISA
0.1µg Cynomolgus CTLA-4, His Tag Per Well

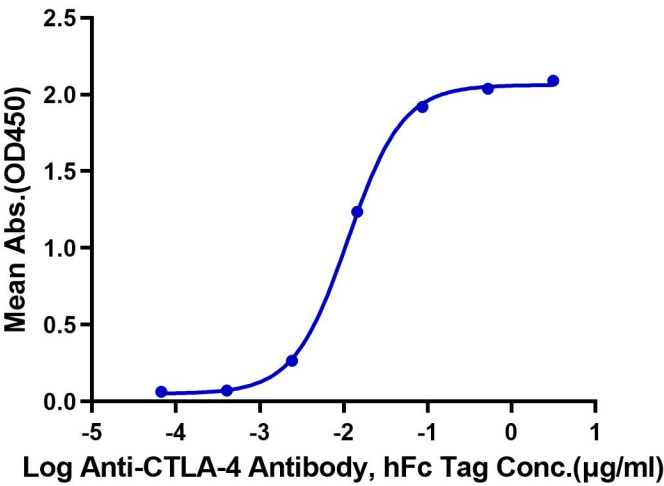


Immobilized Cynomolgus CTLA-4, His Tag at 1µg/ml (100µl/well) on the plate. Dose response curve for Cynomolgus B7-1, hFc Tag with the EC50 of 7.4ng/ml determined by ELISA (QC Test).

ELISA Data

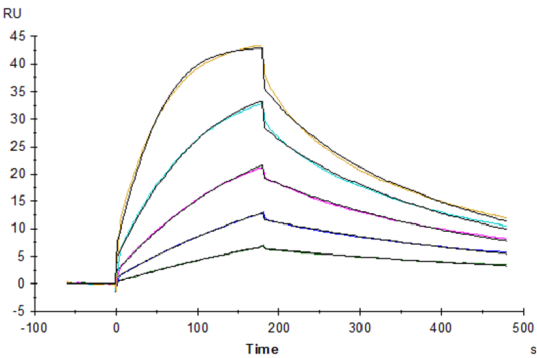
Assay Data

Cynomolgus CTLA-4, His Tag ELISA
0.1µg Cynomolgus CTLA-4, His Tag Per Well



Immobilized Cynomolgus CTLA-4, His Tag at 1µg/ml (100µl/well) on the plate. Dose response curve for Anti-CTLA-4 Antibody, hFc Tag with the EC50 of 11.2ng/ml determined by ELISA.

SPR Data



Cynomolgus B7-1, His Tag immobilized on CM5 Chip can bind Cynomolgus CTLA-4, His Tag with an affinity constant of 9.90 nM as determined in SPR assay (Biacore T200).