

Human CXCL16 Protein

Cat. No. CXC-HM216

Description

Source	Recombinant Human CXCL16 Protein is expressed from HEK293 with hFc tag at the C-Terminus. It contains Asn30-Thr205.
Accession	Q9H2A7
Molecular Weight	The protein has a predicted MW of 45.9 kDa. Due to glycosylation, the protein migrates to 70-90 kDa based on Bis-Tris PAGE result.
Endotoxin	Less than 1EU per µg by the LAL method.
Purity	> 95% as determined by Bis-Tris PAGE > 90% as determined by HPLC

Formulation and Storage

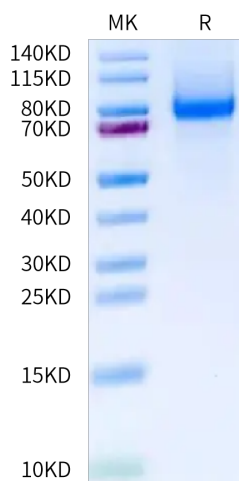
Formulation	Supplied as 0.22µm filtered solution in PBS (pH 7.4).
Storage	Valid for 12 months from date of receipt when stored at -80°C. Recommend to aliquot the protein into smaller quantities for optimal storage. Please minimize freeze-thaw cycles.

Background

CXC chemokine ligand 16 (CXCL16) is a CXC soluble chemokine, an adhesion molecule and a cell surface scavenger receptor. CXCL16 regulates inflammation, tissue injury and fibrosis. Parenchymal renal cells, vascular wall cells, leukocytes and platelets express and/or release CXCL16 under the regulation of inflammatory mediators. CXCL16 expression is increased in experimental and human nephropathies. Targeting CXCL16 protected from experimental glomerular injury or interstitial fibrosis.

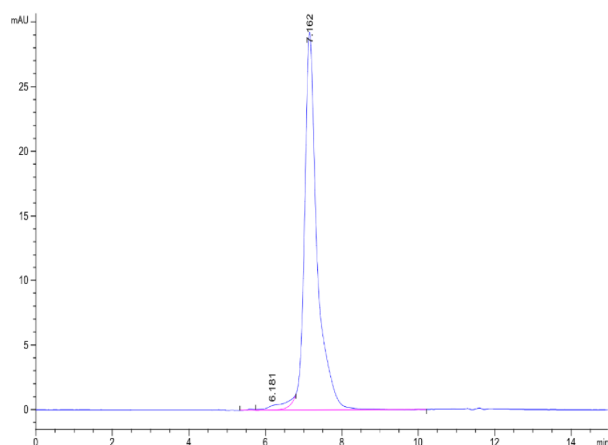
Assay Data

Bis-Tris PAGE



Human CXCL16 on Bis-Tris PAGE under reduced condition. The purity is greater than 95%.

SEC-HPLC



The purity of Human CXCL16 is greater than 90% as determined by SEC-HPLC.