

Mouse CXCL16 Protein

Cat. No. CXC-MM216

Description

Source	Recombinant Mouse CXCL16 Protein is expressed from HEK293 with hFc tag at the C-Terminus. It contains Asn27-Trp201.
Accession	Q8BSU2
Molecular Weight	The protein has a predicted MW of 45.9 kDa. Due to glycosylation, the protein migrates to 68-70 kDa based on Tris-Bis PAGE result.
Endotoxin	Less than 1EU per µg by the LAL method.
Purity	> 95% as determined by Tris-Bis PAGE > 90% as determined by HPLC

Formulation and Storage

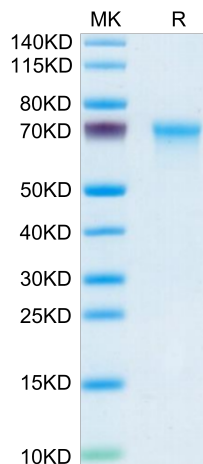
Formulation	Lyophilized from 0.22µm filtered solution in PBS (pH 7.4). Normally 8% trehalose is added as protectant before lyophilization.
Reconstitution	Centrifuge the tube before opening. Reconstituting to a concentration more than 100 µg/ml is recommended. Dissolve the lyophilized protein in distilled water.
Storage	-20 to -80°C for 12 months as supplied from date of receipt. -20 to -80°C for 3-6 months in unopened state after reconstitution. 2-8°C for 2-7 days after reconstitution. Recommend to aliquot the protein into smaller quantities for optimal storage. Please minimize freeze-thaw cycles.

Background

CXC chemokine ligand 16 (CXCL16) is a CXC soluble chemokine, an adhesion molecule and a cell surface scavenger receptor. CXCL16 regulates inflammation, tissue injury and fibrosis. Parenchymal renal cells, vascular wall cells, leukocytes and platelets express and/or release CXCL16 under the regulation of inflammatory mediators. CXCL16 expression is increased in experimental and human nephropathies. Targeting CXCL16 protected from experimental glomerular injury or interstitial fibrosis.

Assay Data

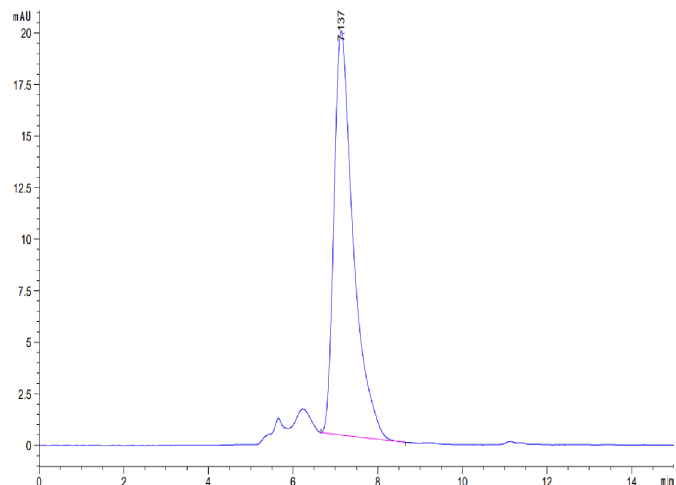
Tris-Bis PAGE



Mouse CXCL16 on Tris-Bis PAGE under reduced condition. The purity is greater than 95%.

SEC-HPLC

Assay Data



The purity of Mouse CXCL16 is greater than 90% as determined by SEC-HPLC.