

Human CX3CR1 Protein-VLP

Cat. No. CXR-HM00V



Description

Source	Recombinant Human CX3CR1 Protein-VLP is expressed from HEK293.
	It contains Met1-Leu355.
Accession	P49238-1
Molecular Weight	The target protein has a predicted MW of 41.6 kDa.
Endotoxin	Less than 1EU per µg by the LAL method.
Purity	>90% as determined by HPLC

Formulation and Storage

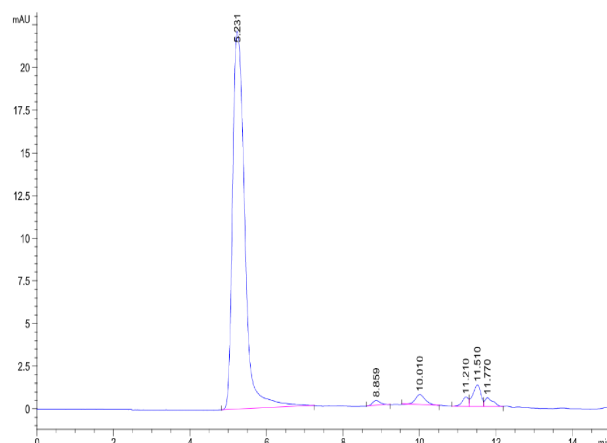
Formulation	Supplied as 0.22µm filtered solution in PBS, 150mM L-Arginine (pH 7.4). Notice: If you need it for immunization, water-soluble adjuvant is recommended.
Storage	Valid for 12 months from date of receipt when stored at -80°C. Recommend to aliquot the protein into smaller quantities for optimal storage. Please minimize freeze-thaw cycles.

Background

CX3CR1, also known as G-protein coupled receptor 13, is a receptor of CX3CL1. It is primarily expressed on monocytes, macrophages, dendritic cells, T cells, and natural killer cells. The binding of CX3CL1 to CX3CR1 induces the activation of heterotrimeric G proteins associated with this receptor. In addition, it triggers the signal pathways of MAPK and AKT, which play essential roles in tumour biology.

Assay Data

SEC-HPLC

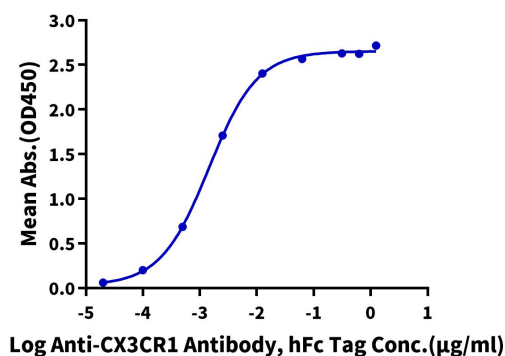


The purity of Human CX3CR1 VLP is greater than 90% as determined by SEC-HPLC.

ELISA Data

Human CX3CR1 VLP ELISA

0.5µg Human CX3CR1 VLP Per Well



Immobilized Human CX3CR1 VLP at 5µg/ml (100µl/well) on the plate. Dose response curve for Anti-CX3CR1 Antibody, hFc Tag with the EC₅₀ of 1.4ng/ml determined by ELISA (QC Test).