

Canine DDT Protein

Cat. No. DDT-DE101

Description

Source	Recombinant Canine DDT Protein is expressed from E.coli with His tag at the N-Terminus. It contains Pro2-Leu118.
Accession	XP_003639975.2
Molecular Weight	The protein has a predicted MW of 13.54 kDa same as Bis-Tris PAGE result.
Endotoxin	Less than 1EU per µg by the LAL method.
Purity	> 95% as determined by Bis-Tris PAGE > 90% as determined by HPLC

Formulation and Storage

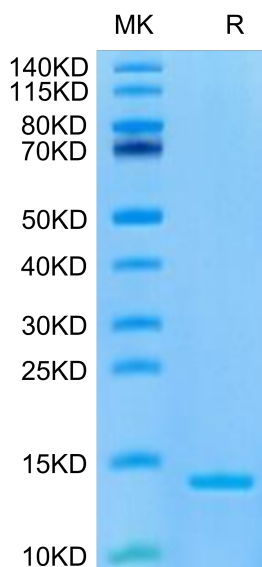
Formulation	Supplied as 0.22µm filtered solution in 50mM Tris, 150mM NaCl, 10% Glycerol (pH 8.0).
Storage	Valid for 12 months from date of receipt when stored at -80°C. Recommend to aliquot the protein into smaller quantities for optimal storage. Please minimize freeze-thaw cycles.

Background

D-dopachrome tautomerase (D-DT) is a newly described cytokine and a member of the macrophage migration inhibitory factor (MIF) protein superfamily. The D-DT protein also is present in most tissues and circulates in serum at similar concentrations as MIF. D-DT binds the MIF cell surface receptor complex, CD74/CD44, with high affinity and induces similar cell signaling and effector functions.

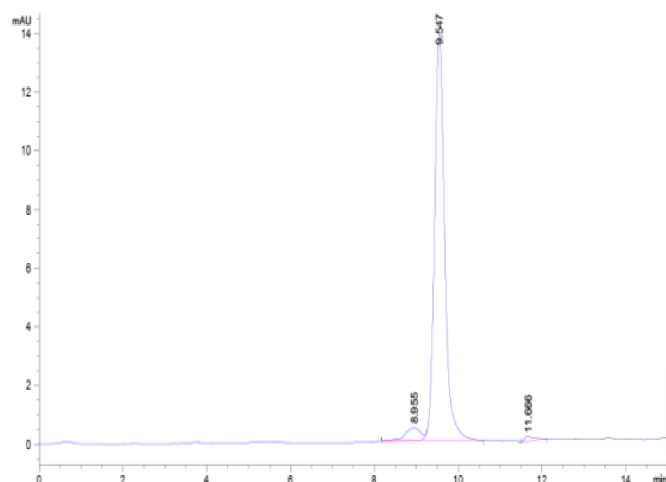
Assay Data

Bis-Tris PAGE



Canine DDT on Bis-Tris PAGE under reduced condition. The purity is greater than 95%.

SEC-HPLC



The purity of Canine DDT is greater than 90% as determined by SEC-HPLC.