

# Cynomolgus/Rhesus macaque DKK1 Protein, Ultra Low Endotoxin

Cat. No. DKK-CM301-UL

## Description

<b>Source</b>	Recombinant Cynomolgus/Rhesus macaque DKK1 Protein is expressed from HEK293 with mFc (IgG1) tag at the C-Terminus. It contains Thr32-His266.
<b>Accession</b>	XP_005565907.1(Cynomolgus) / NP_001247454.1(Rhesus macaque)
<b>Molecular Weight</b>	The protein has a predicted MW of 51.42 kDa. Due to glycosylation, the protein migrates to 60-70 kDa based on Bis-Tris PAGE result.
<b>Endotoxin</b>	Less than 0.01 EU per µg by the LAL method.
<b>Purity</b>	> 95% as determined by Bis-Tris PAGE > 95% as determined by HPLC

## Formulation and Storage

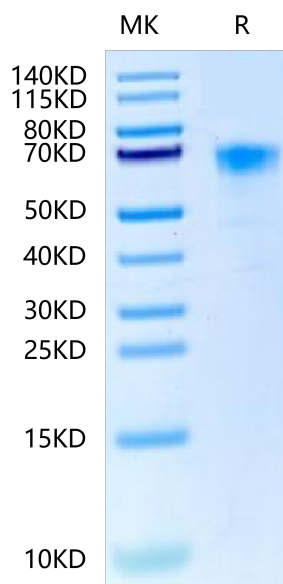
<b>Formulation</b>	Lyophilized from 0.22µm filtered solution in PBS (pH 7.4). Normally 8% trehalose is added as protectant before lyophilization.
<b>Reconstitution</b>	Dissolve the lyophilized protein in distilled water. Please refer to the Certificate of Analysis for detailed instructions.
<b>Storage</b>	-20 to -80°C for 12 months as supplied from date of receipt. -80°C for 3 months after reconstitution. Recommend to aliquot the protein into smaller quantities for optimal storage. Please minimize freeze-thaw cycles.

## Background

Dickkopf related protein 1 (Dkk-1) is the founding member of the Dickkopf family of proteins that includes Dkk-1, -2, -3, -4, and a related protein, Soggy. Dkk proteins are secreted proteins that contain two conserved cysteine-rich domains separated by a linker region. Dkk antagonizes canonical Wnt signaling by inhibiting LRP5/6 interaction with Wnt and by forming a ternary complex with the transmembrane protein KREMEN that promotes internalization of LRP5/6. DKKs play an important role in vertebrate development, where they locally inhibit Wnt regulated processes such as antero-posterior axial patterning, limb development, somitogenesis and eye formation.

## Assay Data

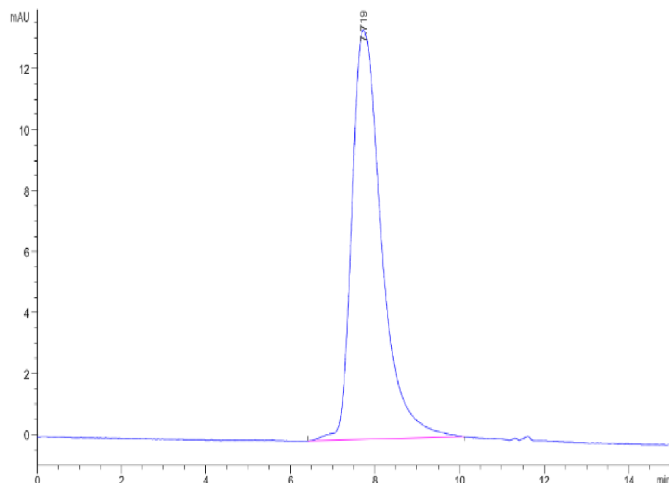
### Bis-Tris PAGE



Cynomolgus/Rhesus macaque DKK1 on Bis-Tris PAGE under reduced condition. The purity is greater than 95%.

### SEC-HPLC

Assay Data

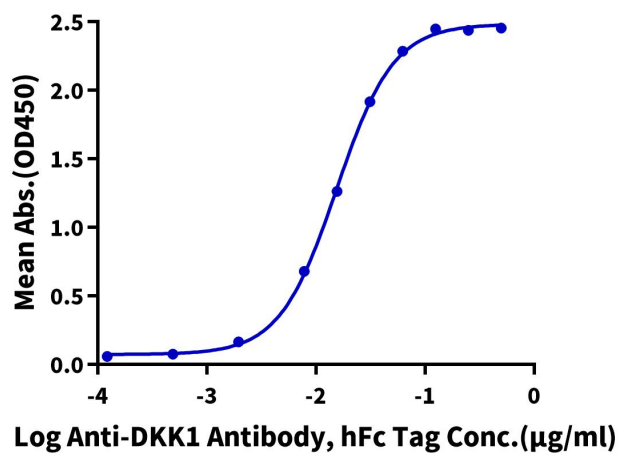


The purity of Cynomolgus/Rhesus macaque DKK1 is greater than 95% as determined by SEC-HPLC.

ELISA Data

Cynomolgus/Rhesus macaque DKK1, mFc Tag ELISA

0.1µg Cynomolgus/Rhesus macaque DKK1, mFc Tag Per Well



Immobilized Cynomolgus/Rhesus macaque DKK1, mFc Tag at 1µg/ml (100µl/well) on the plate. Dose response curve for Anti-DKK1 Antibody, hFc Tag with the EC50 of 15.5ng/ml determined by ELISA (QC Test).